



Austin Independent School District 2009-2010 Mills Elementary School Campus Report Card

<http://www.austinschools.org/mills>



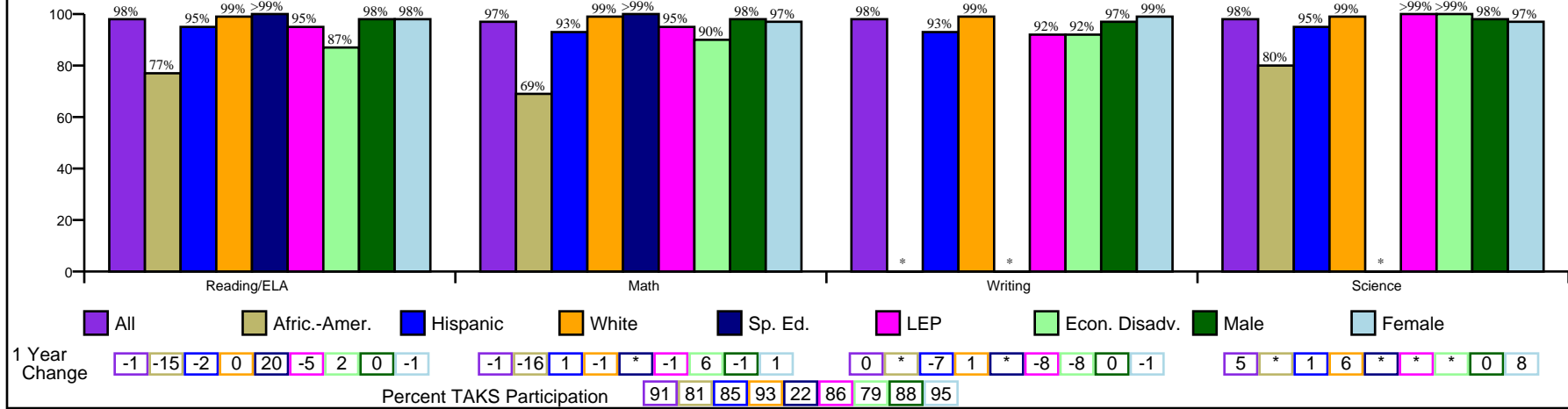
6201 Davis Lane
Austin, TX 78749
Phone: (512) 841-2400
Fax: (512) 841-2490
Principal: Patricia Butler

State Accountability Ratings
2007 Exemplary 2008 Exemplary 2009 Exemplary
Adequate Yearly Progress per NCLB
Met Met Met

Gold Performance Acknowledgements
★ ★ ★ ★

http://www.austinisd.org/inside/docs/State_Fed_expl.doc

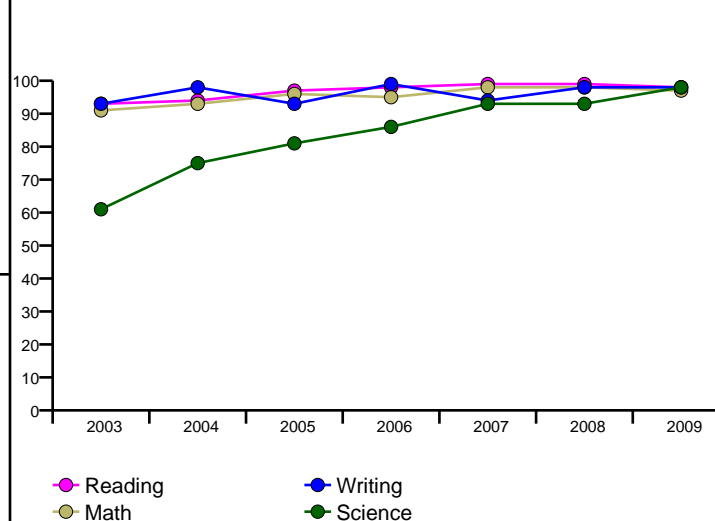
Percent of Students Passing TAKS, Spring 2009



Percent of Students Passing TAKS, 2003-2009

	Reading/ELA	Math	Writing	Science
2003	93%	91%	93%	61%
2004	94%	93%	98%	75%
2005	97%	96%	93%	81%
2006	98%	95%	99%	86%
2007	99%	98%	94%	93%
2008	99%	98%	98%	93%
2009	98%	97%	98%	98%
1yr Change	-1	-1	0	5
5yr Change	4	4	0	23
State Goal	70%	60%	70%	55%
Federal Goal	73%	67%		

TAKS Passing Rates by Year



Indicators Associated with Higher Education Readiness

Not Applicable

Percent of Students Commended on TAKS, Spring 2009

	Reading/ELA	Math	Writing	Science
All	68%	66%	53%	68%
Afric.-Amer.	38%	46%	*	40%
Hispanic	53%	51%	50%	60%
White	72%	68%	52%	70%
Sp. Ed.	29%	57%	*	*
LEP	50%	63%	46%	58%
Econ. Disadv.	40%	43%	31%	57%
Male	65%	63%	44%	65%
Female	70%	68%	59%	71%

District Report Card:
http://www.austinisd.org/inside/docs/crc_district_2009_2010.pdf

* No data reported for fewer than 5 students

Glossary:
http://www.austinisd.org/inside/docs/crc_glossary.doc

NCLB Report Card:
http://www.tea.state.tx.us/index4.aspx?id=4638&menu_id=798



Austin Independent School District 2009-2010 Mills Elementary School Campus Report Card

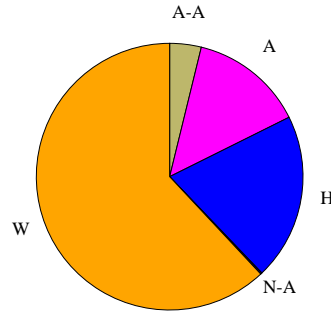
<http://www.austinschools.org/mills>



6201 Davis Lane
Austin, TX 78749
Phone: (512) 841-2400
Fax: (512) 841-2490
Principal: Patricia Butler

Student Profile, 2009-10

Enrollment	1099
Gender	
Female	49.2%
Male	50.8%
Transfers	
Inbound	
NCLB	0
Choice	71
Outbound	
NCLB	0
Choice	28



Race/Ethnicity	
■ Afric.-Amer. (A-A)	3.8%
■ Asian (A)	13.8%
■ Hispanic (H)	20.2%
■ Nat.-Amer. (N-A)	0.2%
■ White (W)	62.0%

	TELPAS		
Level	2008	2009	Change
Beginning	4%	3%	-1
Intermediate	7%	9%	2
Advanced	21%	22%	1
Advanced High	67%	65%	-2

Students by Category, 2009-10

English as Second Language	8.2%
Gifted/Talented	5.1%
Advanced Courses	n/a
Special Ed.	7.5%
Career Tech	n/a
Economic Disadvantage	7.9%
Limited English Proficiency	8.9%
At-Risk	12.6%
Bilingual	0.1%
First Year US Enrollment	0.8%
Migrant	0.0%

Student Behaviors, 2008-09

Attendance Rate	96.6%
Disciplinary Placement	n/a
Retention Rates	
Kindergarten	1.1%
1st Grade	0.0%
2nd Grade	1.2%
3rd Grade	0.0%
4th Grade	0.0%
5th Grade	0.0%

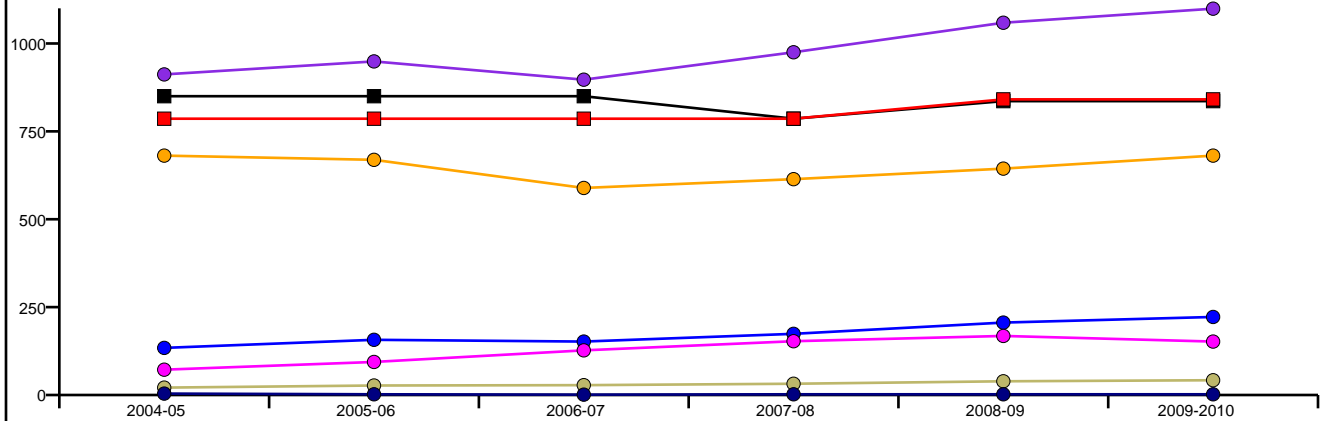
Teacher & Staff Profile, 2009-10

Gender	
Female	91.9%
Male	8.1%

Race/Ethnicity	
African-American	1.2%
Asian	2.3%
Hispanic	12.8%
Native American	0.0%
White	83.7%

Average Years of	
Teaching Experience	14
Highly Qualified, 08-09	100.0%
% Classes Taught by	
Highly Qualified, 08-09	100.0%

Enrollment by Ethnicity by Year and Building Capacity



	2004-05	2005-06	2006-07	2007-08	2008-09	2009-2010
■ Perm. Cap.	850	850	850	786	836	836
■ Func. Cap.	786	786	786	786	841	841
● All	912	949	897	975	1059	1099
● Afric.-Amer.	21	27	28	32	39	42
● Hispanic	134	157	152	174	206	222
● White	681	669	589	614	644	681
● Nat.-Amer.	4	2	1	2	2	2
● Asian	72	94	127	153	168	152