



Austin Independent School District 2009-2010 Patton Elementary School Campus Report Card

<http://www.austinschools.org/patton>



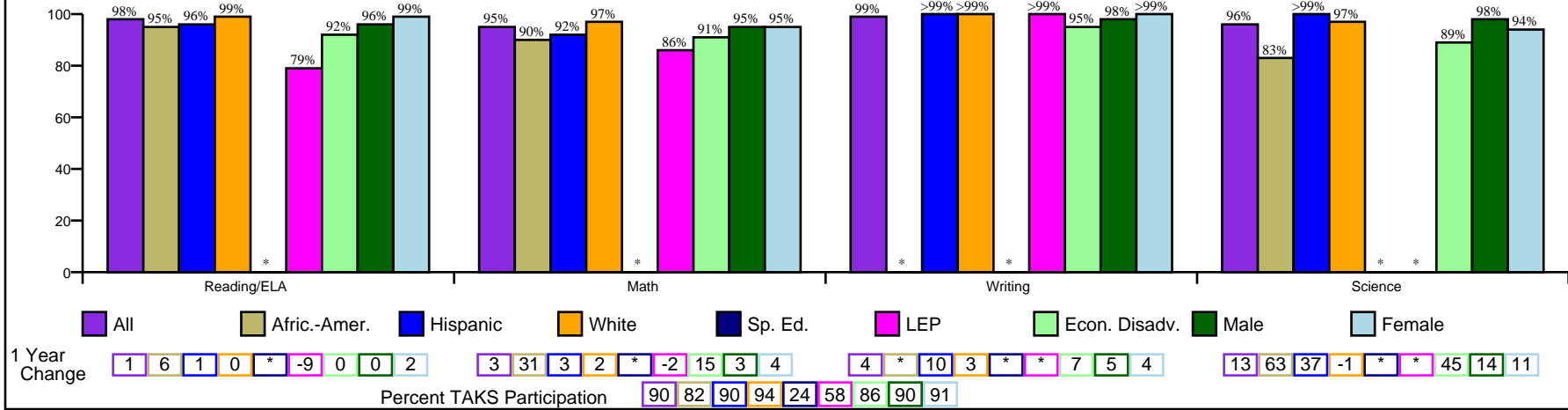
6001 Westcreek Drive
Austin, TX 78749
Phone: (512) 414-1780
Fax: (512) 892-6541
Principal: Alan Neal Stevens

State Accountability Ratings
2007: Acceptable 2008: Acceptable 2009: Exemplary
Adequate Yearly Progress per NCLB
2007: Met 2008: Met 2009: Met

Gold Performance Acknowledgements
★ ★ ★ ★

http://www.austinisd.org/inside/docs/State_Fed_expl.doc

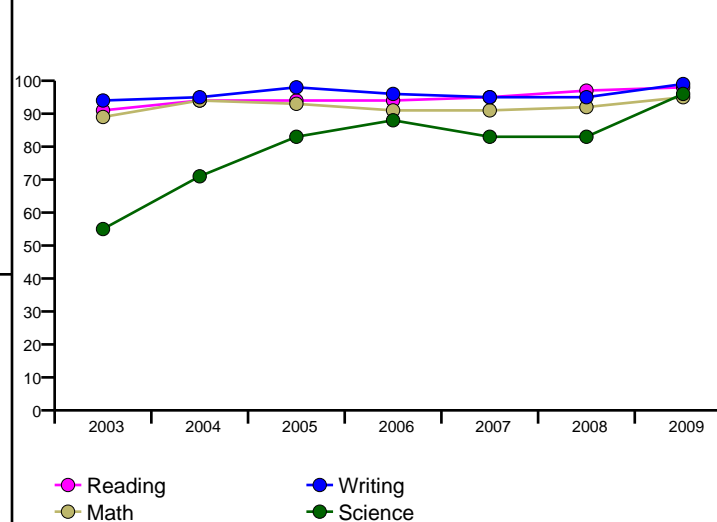
Percent of Students Passing TAKS, Spring 2009



Percent of Students Passing TAKS, 2003-2009

	Reading/ELA	Math	Writing	Science
2003	91%	89%	94%	55%
2004	94%	94%	95%	71%
2005	94%	93%	98%	83%
2006	94%	91%	96%	88%
2007	95%	91%	95%	83%
2008	97%	92%	95%	83%
2009	98%	95%	99%	96%
1yr Change	1	3	4	13
5yr Change	4	1	4	25
State Goal	70%	60%	70%	55%
Federal Goal	73%	67%		

TAKS Passing Rates by Year



Indicators Associated with Higher Education Readiness

Not Applicable

Percent of Students Commended on TAKS, Spring 2009

	Reading/ELA	Math	Writing	Science
All	55%	59%	53%	66%
Afric.-Amer.	16%	25%	*	33%
Hispanic	46%	53%	46%	61%
White	64%	65%	57%	75%
Sp. Ed.	*	*	*	*
LEP	21%	43%	<1%	*
Econ. Disadv.	37%	38%	26%	50%
Male	56%	62%	46%	70%
Female	54%	55%	68%	62%

District Report Card:
http://www.austinisd.org/inside/docs/crc_district_2009_2010.pdf

* No data reported for fewer than 5 students

Glossary:
http://www.austinisd.org/inside/docs/crc_glossary.doc

NCLB Report Card:
http://www.tea.state.tx.us/index4.aspx?id=4638&menu_id=798



Austin Independent School District 2009-2010 Patton Elementary School Campus Report Card

<http://www.austinschools.org/patton>



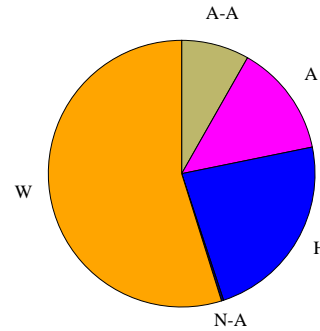
6001 Westcreek Drive
Austin, TX 78749
Phone: (512) 414-1780
Fax: (512) 892-6541
Principal: Alan Neal Stevens

Student Profile, 2009-10

Enrollment	766
Gender	
Female	45.4%
Male	54.6%
Transfers	
Inbound	
NCLB	0
Choice	107
Outbound	
NCLB	0
Choice	47

Race/Ethnicity

■ Afric.-Amer. (A-A)	8.2%
■ Asian (A)	13.6%
■ Hispanic (H)	23.1%
■ Nat.-Amer. (N-A)	0.3%
■ White (W)	54.8%



TELPAS

Level	2008	2009	Change
Beginning	7%	2%	-5
Intermediate	21%	23%	2
Advanced	36%	30%	-6
Advanced High	36%	45%	9

Students by Category, 2009-10

English as Second Language	12.0%
Gifted/Talented	5.5%
Advanced Courses	n/a
Special Ed.	4.7%
Career Tech	n/a
Economic Disadvantage	27.3%
Limited English Proficiency	13.6%
At-Risk	18.5%
Bilingual	1.2%
First Year US Enrollment	2.0%
Migrant	0.0%

Student Behaviors, 2008-09

Attendance Rate	96.4%
Disciplinary Placement	0.3%
Retention Rates	
Kindergarten	0.0%
1st Grade	0.0%
2nd Grade	0.9%
3rd Grade	0.0%
4th Grade	0.0%
5th Grade	0.0%

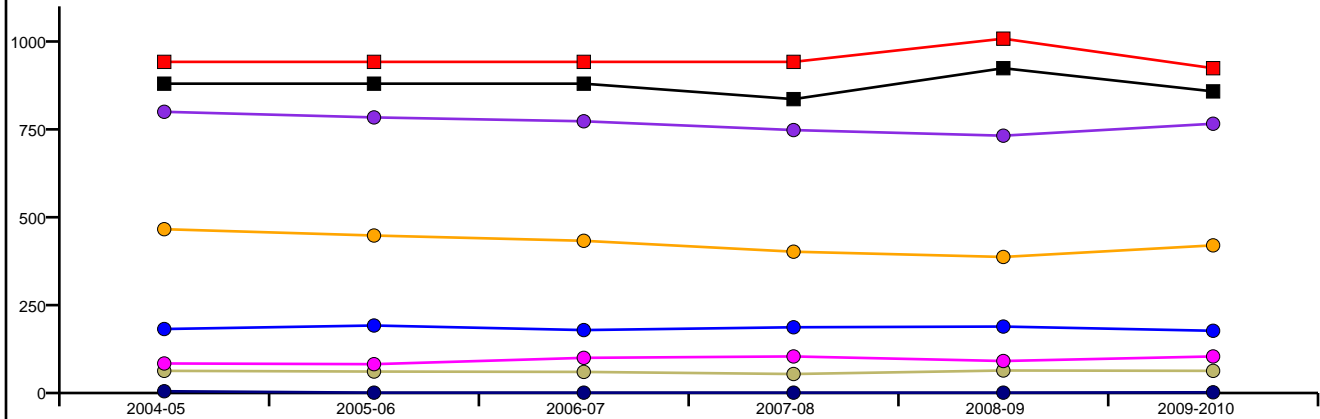
Teacher & Staff Profile, 2009-10

Gender	
Female	93.0%
Male	7.0%

Race/Ethnicity	
African-American	0.0%
Asian	0.0%
Hispanic	10.5%
Native American	0.0%
White	89.5%

Average Years of Teaching Experience	16
Highly Qualified, 08-09	100.0%
% Classes Taught by Highly Qualified, 08-09	100.0%

Enrollment by Ethnicity by Year and Building Capacity



	2004-05	2005-06	2006-07	2007-08	2008-09	2009-2010
■ Perm. Cap.	880	880	880	836	924	858
■ Func. Cap.	942	942	942	942	1008	924
● All	800	784	773	748	732	766
● Afric.-Amer.	63	61	60	54	64	63
● Hispanic	182	192	179	187	189	177
● White	466	448	433	402	387	420
● Nat.-Amer.	5	1	1	1	1	2
● Asian	84	82	100	104	91	104