



Austin Independent School District 2009-2010 Reilly Elementary School Campus Report Card

<http://www.austinisd.org/schools/details.phtml?id=098>



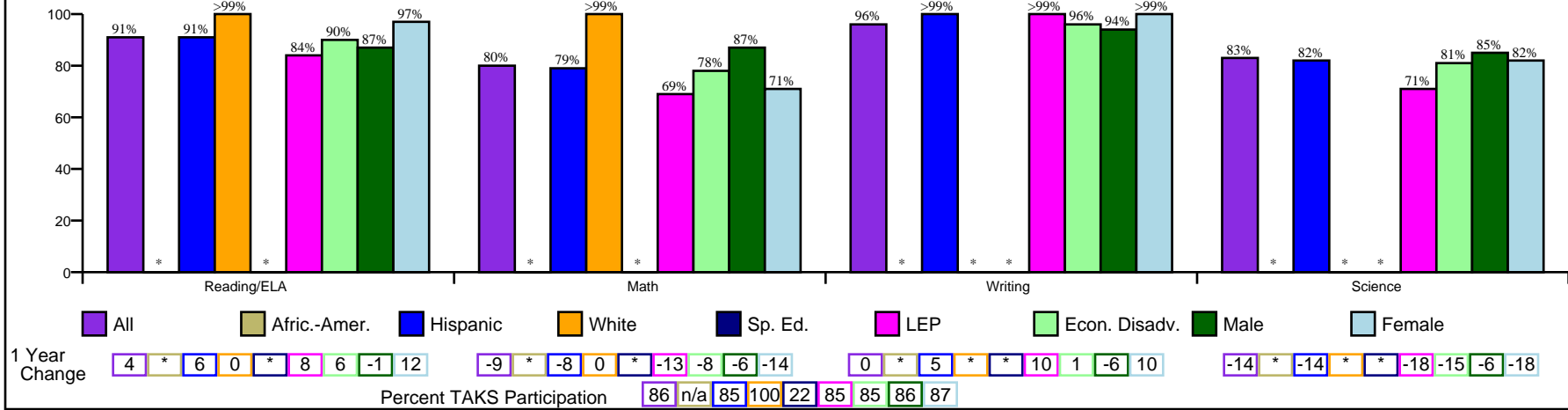
405 Denson Drive
Austin, TX 78752
Phone: (512) 414-4464
Fax: (512) 453-1193
Principal: Anna Garza (Caballero)

State Accountability Ratings
2007: Acceptable 2008: Recognized 2009: Recognized
Adequate Yearly Progress per NCLB
Met Met Met

Gold Performance Acknowledgements
★ ★ ★

http://www.austinisd.org/inside/docs/State_Fed_expl.doc

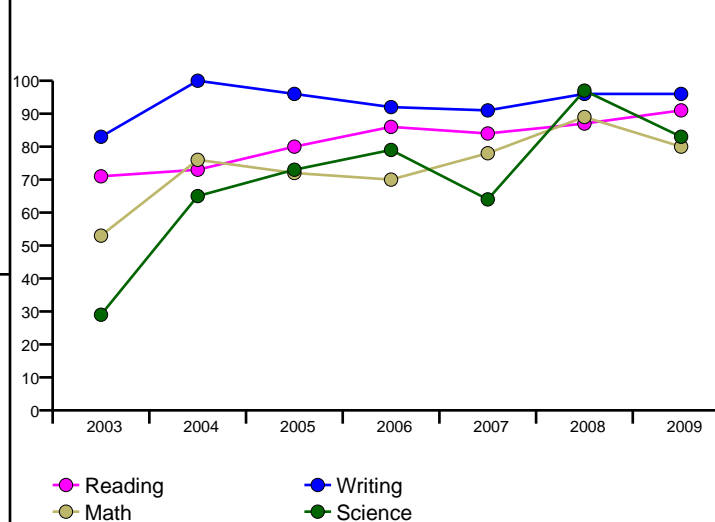
Percent of Students Passing TAKS, Spring 2009



Percent of Students Passing TAKS, 2003-2009

	Reading/ELA	Math	Writing	Science
2003	71%	53%	83%	29%
2004	73%	76%	100%	65%
2005	80%	72%	96%	73%
2006	86%	70%	92%	79%
2007	84%	78%	91%	64%
2008	87%	89%	96%	97%
2009	91%	80%	96%	83%
1yr Change	4	-9	0	-14
5yr Change	18	4	-4	18
State Goal	70%	60%	70%	55%
Federal Goal	73%	67%		

TAKS Passing Rates by Year



Indicators Associated with Higher Education Readiness

Not Applicable

Percent of Students Commended on TAKS, Spring 2009

	Reading/ELA	Math	Writing	Science
All	24%	38%	18%	29%
Afric.-Amer.	*	*	*	*
Hispanic	20%	35%	17%	27%
White	80%	80%	*	*
Sp. Ed.	*	*	*	*
LEP	16%	26%	17%	<1%
Econ. Disadv.	21%	37%	16%	29%
Male	22%	45%	6%	54%
Female	26%	29%	36%	<1%

District Report Card:
http://www.austinisd.org/inside/docs/crc_district_2009_2010.pdf

* No data reported for fewer than 5 students

Glossary:
http://www.austinisd.org/inside/docs/crc_glossary.doc

NCLB Report Card:
http://www.tea.state.tx.us/index4.aspx?id=4638&menu_id=798



Austin Independent School District 2009-2010 Reilly Elementary School Campus Report Card

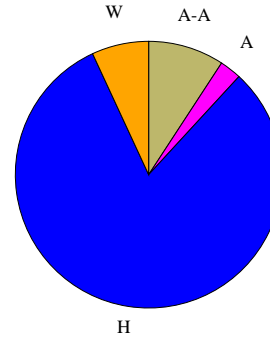
<http://www.austinisd.org/schools/details.phtml?id=098>



405 Denson Drive
Austin, TX 78752
Phone: (512) 414-4464
Fax: (512) 453-1193
Principal: Anna Garza (Caballero)

Student Profile, 2009-10

Enrollment	304	
Gender		
Female	48.0%	
Male	52.0%	
Transfers		
Inbound		
NCLB	0	
Choice	34	
Outbound		
NCLB	0	
Choice	49	



Race/Ethnicity		
■ Afric.-Amer. (A-A)	9.2%	
■ Asian (A)	2.6%	
■ Hispanic (H)	81.3%	
■ Nat.-Amer. (N-A)	0.0%	
■ White (W)	6.9%	

TELPAS			
Level	2008	2009	Change
Beginning	39%	34%	-5
Intermediate	28%	19%	-9
Advanced	20%	22%	2
Advanced High	13%	25%	12

Students by Category, 2009-10

English as Second Language	6.6%
Gifted/Talented	1.6%
Advanced Courses	n/a
Special Ed.	8.9%
Career Tech	n/a
Economic Disadvantage	94.7%
Limited English Proficiency	57.2%
At-Risk	63.2%
Bilingual	49.3%
First Year US Enrollment	4.6%
Migrant	0.0%

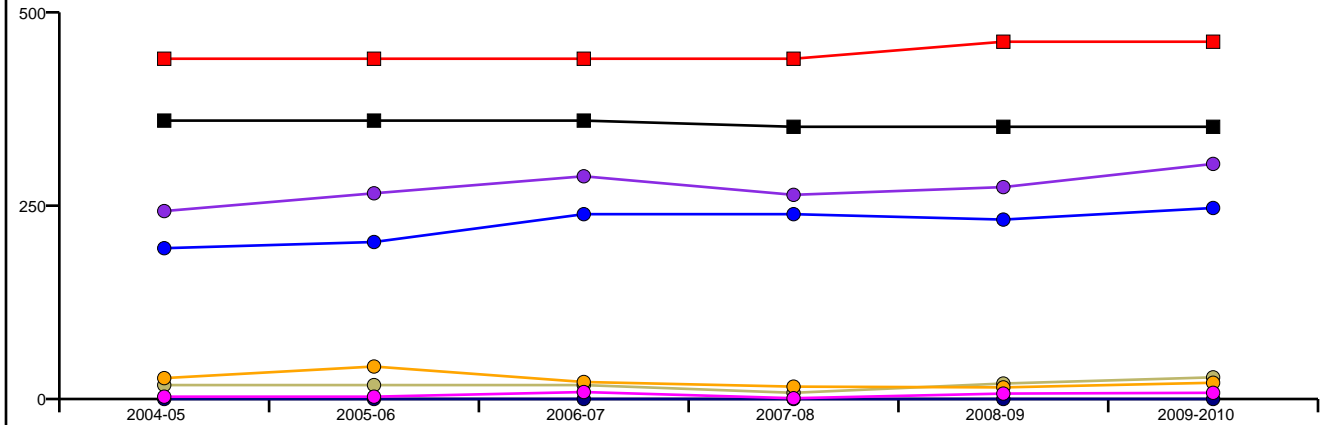
Student Behaviors, 2008-09

Attendance Rate	96.3%
Disciplinary Placement	n/a
Retention Rates	
Kindergarten	5.7%
1st Grade	5.5%
2nd Grade	0.0%
3rd Grade	7.8%
4th Grade	0.0%
5th Grade	0.0%

Teacher & Staff Profile, 2009-10

Gender	
Female	76.7%
Male	23.3%
Race/Ethnicity	
African-American	0.0%
Asian	3.3%
Hispanic	60.0%
Native American	0.0%
White	36.7%
Average Years of Teaching Experience	
Highly Qualified, 08-09	9
% Classes Taught by Highly Qualified, 08-09	
Highly Qualified, 08-09	100.0%

Enrollment by Ethnicity by Year and Building Capacity



	2004-05	2005-06	2006-07	2007-08	2008-09	2009-2010
■ Perm. Cap.	360	360	360	352	352	352
■ Func. Cap.	440	440	440	440	462	462
● All	243	266	288	264	274	304
● Afric.-Amer.	18	18	18	8	20	28
● Hispanic	195	203	239	239	232	247
● White	27	42	22	16	15	21
● Nat.-Amer.	0	0	0	0	0	0
● Asian	3	3	9	1	7	8