



Austin Independent School District 2009-2010 Highland Park Elementary School Campus Report Card

<http://www.austinschools.org/highlandpark>



4900 Fairview
Austin, TX 78731
Phone: (512) 414-2090
Fax: (512) 451-2076
Principal: Tammie Workman

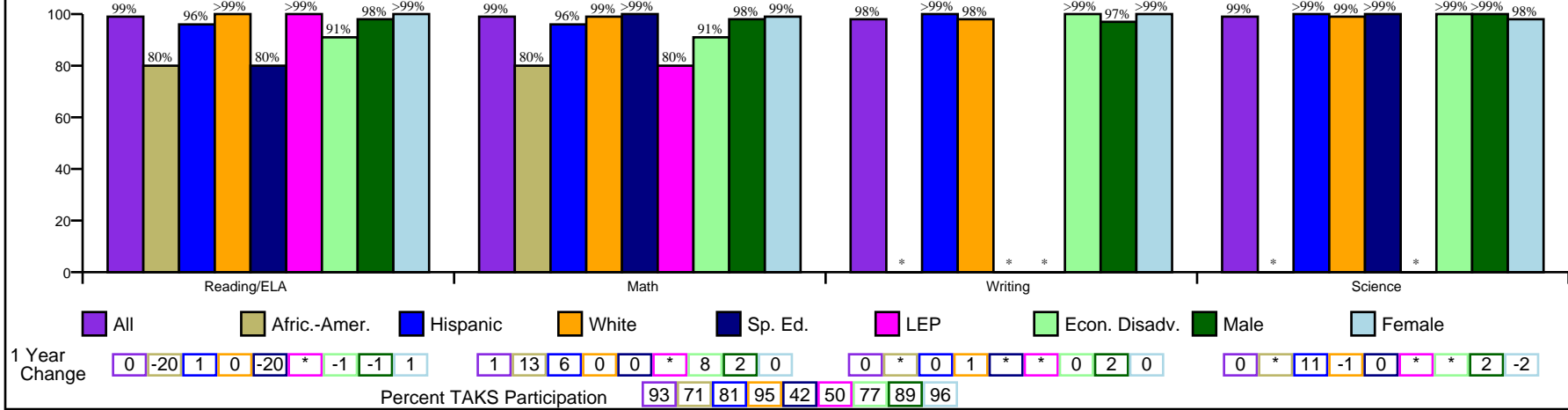
State Accountability Ratings
2007 Exemplary 2008 Exemplary 2009 Exemplary

Adequate Yearly Progress per NCLB
Met Met Met

Gold Performance Acknowledgements
★ ★ ★ ★

http://www.austinisd.org/inside/docs/State_Fed_expl.doc

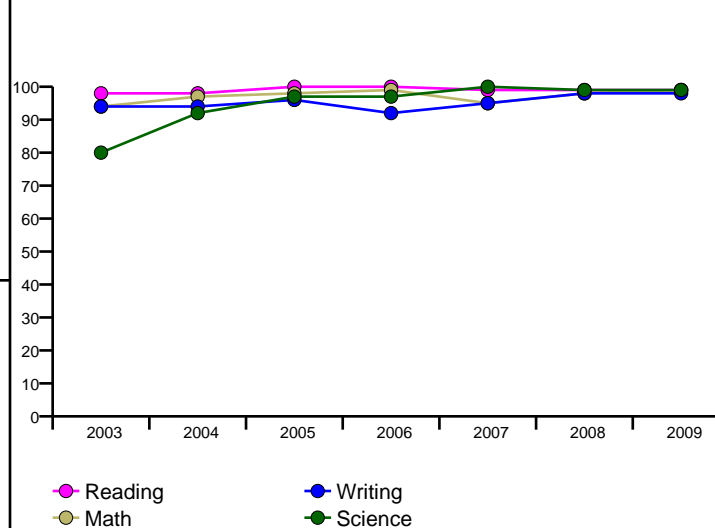
Percent of Students Passing TAKS, Spring 2009



Percent of Students Passing TAKS, 2003-2009

	Reading/ELA	Math	Writing	Science
2003	98%	94%	94%	80%
2004	98%	97%	94%	92%
2005	100%	98%	96%	97%
2006	100%	99%	92%	97%
2007	99%	95%	95%	100%
2008	99%	98%	98%	99%
2009	99%	99%	98%	99%
1yr Change	0	1	0	0
5yr Change	1	2	4	7
State Goal	70%	60%	70%	55%
Federal Goal	73%	67%		

TAKS Passing Rates by Year



Indicators Associated with Higher Education Readiness

Not Applicable

Percent of Students Commended on TAKS, Spring 2009

	Reading/ELA	Math	Writing	Science
All	77%	68%	65%	84%
Afric.-Amer.	20%	<1%	*	*
Hispanic	65%	64%	67%	80%
White	80%	70%	67%	86%
Sp. Ed.	20%	50%	*	67%
LEP	40%	40%	*	*
Econ. Disadv.	52%	45%	43%	57%
Male	75%	69%	39%	87%
Female	79%	68%	88%	80%

District Report Card:
http://www.austinisd.org/inside/docs/crc_district_2009_2010.pdf

* No data reported for fewer than 5 students

Glossary:
http://www.austinisd.org/inside/docs/crc_glossary.doc

NCLB Report Card:
http://www.tea.state.tx.us/index4.aspx?id=4638&menu_id=798



Austin Independent School District 2009-2010 Highland Park Elementary School Campus Report Card

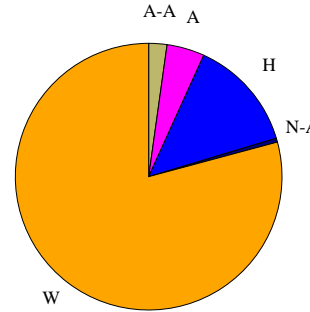
<http://www.austinschools.org/highlandpark>



4900 Fairview
Austin, TX 78731
Phone: (512) 414-2090
Fax: (512) 451-2076
Principal: Tammie Workman

Student Profile, 2009-10

Enrollment	634
Gender	
Female	49.4%
Male	50.6%
Transfers	
Inbound	
NCLB	0
Choice	125
Outbound	
NCLB	0
Choice	50



Race/Ethnicity	
■ Afric.-Amer. (A-A)	2.2%
■ Asian (A)	4.6%
■ Hispanic (H)	13.6%
■ Nat.-Amer. (N-A)	0.5%
■ White (W)	79.2%

TELPAS

Level	2008	2009	Change
Beginning	15%	17%	2
Intermediate	15%	17%	2
Advanced	23%	17%	-6
Advanced High	46%	50%	4

Students by Category, 2009-10

English as Second Language	2.8%
Gifted/Talented	7.4%
Advanced Courses	n/a
Special Ed.	5.5%
Career Tech	n/a
Economic Disadvantage	7.7%
Limited English Proficiency	4.1%
At-Risk	7.7%
Bilingual	0.0%
First Year US Enrollment	0.2%
Migrant	0.0%

Student Behaviors, 2008-09

Attendance Rate	97.5%
Disciplinary Placement	n/a
Retention Rates	
Kindergarten	1.2%
1st Grade	0.0%
2nd Grade	0.0%
3rd Grade	0.0%
4th Grade	0.0%
5th Grade	0.0%

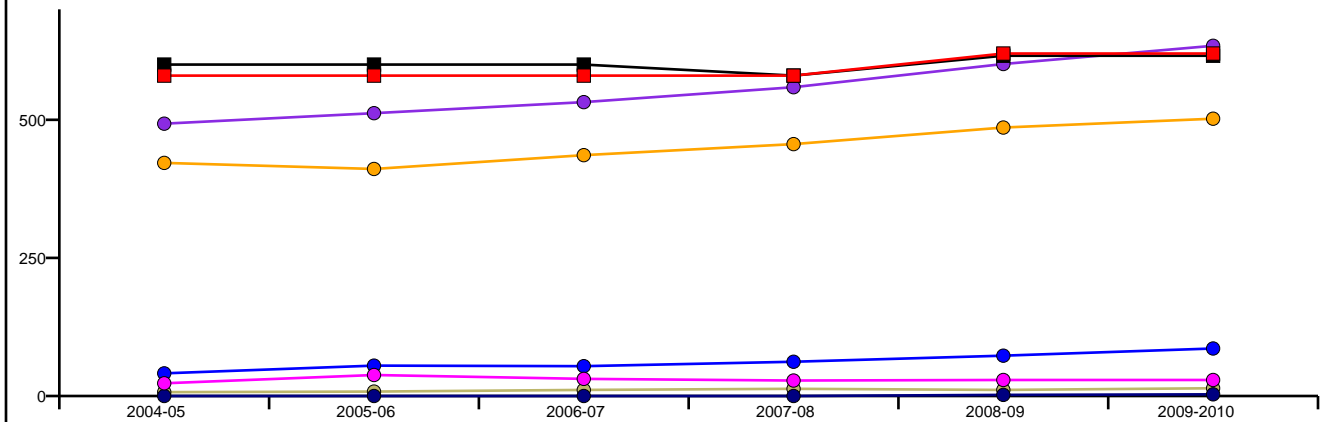
Teacher & Staff Profile, 2009-10

Gender	
Female	83.9%
Male	16.1%

Race/Ethnicity	
African-American	1.8%
Asian	1.8%
Hispanic	10.7%
Native American	0.0%
White	85.7%

Average Years of	
Teaching Experience	14
Highly Qualified, 08-09	100.0%
% Classes Taught by	
Highly Qualified, 08-09	100.0%

Enrollment by Ethnicity by Year and Building Capacity



	2004-05	2005-06	2006-07	2007-08	2008-09	2009-2010
■ Perm. Cap.	600	600	600	580	616	616
■ Func. Cap.	580	580	580	580	620	620
● All	493	512	532	559	601	634
● Afric.-Amer.	7	8	11	13	11	14
● Hispanic	41	55	54	62	73	86
● White	422	411	436	456	486	502
● Nat.-Amer.	0	0	0	0	2	3
● Asian	23	38	31	28	29	29