



HIGH SCHOOL EXIT SURVEY REPORT FOR CLASS OF 2011, AUSTIN INDEPENDENT SCHOOL DISTRICT

The ninth annual Austin Independent School District (AISD) High School Exit Survey was administered online to seniors in every AISD high school during Spring 2011. On each campus, *Project ADVANCE* facilitators primarily were responsible for ensuring all seniors were given the opportunity to complete the survey. Campus-level special education staff identified those seniors cognitively unable to complete the survey. These were the only students deemed ineligible to take the survey. Special education chairs at each campus were tasked with providing eligible special education students with guidance and assistance in completing the survey. Funding for the survey and this report was provided by district local funds.

This report contains the results for the entire AISD Class of 2011. Where available, data are presented from previous senior classes to compare with 2011 responses. In total, 3,793 students in the Class of 2011 completed the survey, for an adjusted response rate of 87.3% (Table 1). The response rates were adjusted such that students not eligible to complete the survey, and those who withdrew from a campus before survey administration, were removed from the total. The ethnic and gender distribution of the district survey sample closely resembled that of the district's senior class, indicating the results can be considered representative of the entire senior class population.

Table 1. High School Exit Survey Adjusted Response Rates, Classes 2009–2011

	Class of 2009	Class of 2010	Class of 2011
All high schools	83.4%	87.9%	87.3%

The report is structured as follows. First, responses to the multiple choice items from the survey are presented. In some cases, two or more tables appear for a single survey item. In response to feedback from campus administrators and staff during data seminars conducted by the Department of Program Evaluation this school year, more detail is provided for 2011 responses. Then, district and campus response rates and survey respondent details are presented to provide context for the results. Campus-level survey results are provided in separate reports and can be found online at:

http://archive.austinisd.org/inside/accountability/evaluation/survey_reports.phtml

INDIVIDUAL ITEM RESPONSES

Seniors' responses to the multiple choice questions were organized into seven general topic areas: postsecondary intentions and family support; high school experiences and campus climate; instruction and technology; postsecondary preparation and advising; and additional results.

POSTSECONDARY INTENTIONS AND FAMILY SUPPORT

**Table 2. Within a Year After Graduating From High School, What Do You Plan to Do?
 (Item 8)**

	2010	2011
Continue my education	91.8%	91.1%
Attend a 4-year college	59.1%	56.8%
Attend a 2-year college	17.8%	17.6%
Attend a school for a technical certificate	5.9%	5.0%
Attend a 2-year & eventually transfer to a 4-year college	19.0%	20.8%
Go into the military	4.3%	4.3%
Be a full-time parent	1.2%	1.6%
Work full-time	11.5%	9.5%
Work part-time	35.0%	32.3%
Other	.	6.7%
No plans/Not sure	5.1%	3.7%

Notes. Results for this item may not match prior year reports. Prior to 2011, the results for this question were based on the total number of survey respondents. In 2011, the results are based on the number of respondents completing this particular question and are consistent with the way all questions on the survey are analyzed. Respondents could select more than one option, so percentages may not total 100%. Missing values, denoted by a period, indicate the item was not included on the respective year's survey.

Table 3. If You Are Not Planning to Pursue Further Education at This Time, What Are Your Primary Reasons? (Item 9)

	2009	2010	2011
Cannot afford to attend school	33.0%	27.2%	21.7%
Childcare or family responsibilities	11.4%	9.2%	11.4%
Don't like attending school	17.6%	18.4%	18.0%
Grades/test scores aren't high enough	21.6%	22.6%	14.3%
Don't feel academically prepared	17.0%	18.4%	15.4%
Need income to support myself/others	34.1%	25.9%	21.7%
My goals don't require additional education	.	13.8%	18.8%
Other	18.8%	23.8%	25.4%

Note. Respondents could select more than one option, so percentages may not total 100%. Missing values, denoted by a period, indicate the item was not included on the respective year's survey.

Table 4a. To What Extent Were Your Parents Involved in the Following School-related Activities? (Item 10)

<i>Percentage who responded parents were involved at least Occasionally</i>	2009	2010	2011
Volunteering at your school	30.3%	28.7%	29.0%
Working with you on homework or school projects	46.8%	44.3%	42.9%
Helping you decide what classes to take	53.4%	51.6%	48.4%
Attending school meetings	45.9%	44.5%	43.9%
Communicating with your teachers	52.1%	48.5%	44.9%
Participating in school leadership opportunities	17.9%	17.0%	17.7%
Attending athletic events	51.5%	50.1%	48.2%
Attending academic events and competitions	25.4%	24.7%	21.8%
Attending performance events	45.0%	43.9%	43.4%
Joining and participating in the PTA	16.5%	16.4%	17.0%

* Response options were *Never, Rarely, Occasionally, and Often.*

Table 4b. During High School, To What Extent Were Your Parents Involved in the Following School-Related Activities? (Item 10)

	Never	Rarely	Occasionally	Often
Volunteering at your school	47.8%	23.2%	19.5%	9.5%
Working with you on homework	26.4%	30.7%	30.8%	12.1%
Helping you decide which classes to take	26.5%	25.1%	30.3%	18.1%
Attending school meetings	32.4%	23.7%	25.4%	18.5%
Communicating with your teachers	22.6%	32.5%	28.7%	16.2%
Participating in school leadership opportunities	60.3%	22.0%	11.9%	5.8%
Attending athletic events and competitions	36.7%	15.0%	18.5%	29.8%
Attending academic events and competitions	58.5%	19.7%	12.6%	9.2%
Attending performance events	38.7%	17.9%	19.0%	24.4%
Joining and participating in the PTA	68.5%	14.4%	10.4%	6.6%

Note. Respondents could select more than one option, so percentages may not total 100%.

Table 5. How Far Did Your Mother, Father, and Older Sibling Go in School? Indicate Their Highest Level of Education. (Item 11)

	Mother			Father			Sibling		
	2009	2010	2011	2009	2010	2011	2009	2010	2011
Did not finish high school	19.2%	19.2%	21.5%	19.6%	21.3%	23.3%	11.2%	8.0%	7.6%
Graduated from high school or earned a GED	19.2%	19.1%	16.0%	17.4%	18.8%	15.3%	22.9%	20.6%	11.2%
Currently attending a 2-year college or technical school	.	.	1.8%	.	.	1.1%	.	.	8.8%
Currently attending a 4-year college	.	.	0.7%	.	.	0.6%	.	.	18.6%
Attended a 2-yr community/junior college or vocational/technical school, but no degree	7.6%	7.4%	5.7%	4.7%	5.5%	3.4%	10.3%	10.7%	6.3%
Graduated from a 2-yr community/junior college or vocational/technical school	4.9%	5.0%	3.5%	3.9%	3.8%	2.8%	3.6%	4.6%	2.7%
Attended a 4-yr college, but did not complete a degree	7.1%	6.2%	5.7%	7.1%	6.4%	5.8%	8.0%	8.8%	3.1%
Graduated from college	21.1%	20.7%	20.9%	19.6%	18.2%	18.3%	15.5%	17.6%	11.1%
Completed a Master's degree or equivalent	10.6%	11.4%	10.9%	11.7%	11.7%	11.4%	3.5%	3.8%	2.6%
Completed a Ph.D., M.D., or other advanced professional degree	3.9%	4.5%	4.3%	7.1%	6.0%	6.5%	1.4%	1.3%	2.0%
Don't know or does not apply	6.4%	6.5%	9.0%	9.0%	8.2%	11.4%	23.6%	24.6%	26.1%

Note. The addition of questions in 2011 pertaining to 2 and 4 yr postsecondary enrollment influenced results of other question options for that year. Thus, comparisons between 2011 and prior years are not appropriate for some question options. In 2010, "older" was added to describe on which sibling to report. If students had more than one older sibling, they were instructed to provide answers for the one with the highest level of education. If they had no older siblings, they were instructed to select *Does not apply*. Missing values, denoted by a period, indicate the item was not included on the respective year's survey.

HIGH SCHOOL EXPERIENCES AND CAMPUS CLIMATE

Table 6. Including Your Current School, How Many Different High Schools Have You Attended? (Item 7)

	2009	2010	2011
1	70.1%	71.9%	74.1%
2	18.4%	18.6%	18.4%
3 or more	11.5%	9.5%	7.5%

Note. Survey indicated that Eastside Memorial, Green and Global were not to be considered different high schools. Also, LASA was not to be considered a different high school than LBJ.

Table 7a. Please Indicate the Number of Years of High School in Which You Participated in Each of These Extracurricular Activities. (Items 12 and 14)

<i>Percentage who reported at least 1 year of participation</i>	2010	2011
<i>In school</i>		
Music	33.7%	34.2%
Theater	18.8%	20.0%
Dance	21.5%	22.6%
Sports	55.6%	56.3%
Academic clubs, UIL academic competitions	20.0%	18.8%
Speech/debate	21.0%	19.8%
Student government	17.3%	14.4%
Career and technical student organizations	15.5%	14.1%
<i>Outside school</i>		
Music	29.9%	29.5%
Theater	8.7%	9.1%
Dance	13.7%	15.6%
Sports	49.6%	51.2%
Community service/volunteering	60.2%	58.4%
Environmental project/activities	25.9%	25.7%
Boy/Girl Scouts	10.2%	9.0%
Family care	21.1%	23.0%

Note. Respondents could select more than one option, so percentages may not total 100%.

* Response options were *Did not participate, 1 year, 2 years, 3 years, or, 4 years.*

Table 7b. Please Indicate the Number of Years of High School in Which You Participated in Each of These Extracurricular Activities. (Items 12 and 14)

	Did not participate	1 year	2 years	3 years	4 years
<i>In school</i>					
Music	65.8%	11.5%	6.0%	4.0%	12.8%
Theater	80.0%	11.8%	3.9%	1.8%	2.5%
Dance	77.4%	8.4%	6.5%	3.4%	4.2%
Sports	43.7%	11.7%	11.8%	8.8%	23.9%
Academic clubs & UIL academic competitions	81.2%	6.6%	3.8%	3.3%	5.0%
Speech/debate	80.2%	16.4%	2.0%	0.9%	0.5%
Student government	85.6%	10.2%	2.0%	0.8%	1.5%
Career and technical student organizations	85.9%	5.7%	3.9%	2.5%	1.9%
<i>Outside school</i>					
Music	70.5%	7.4%	4.4%	2.9%	14.9%
Theater	90.9%	4.4%	1.9%	0.9%	1.9%
Dance	84.4%	5.1%	4.1%	1.8%	4.6%
Sports	48.8%	9.0%	9.0%	6.3%	26.9%
Community service/volunteering	41.6%	15.2%	11.4%	7.0%	24.8%
Environmental project/activities	74.3%	10.1%	5.1%	2.3%	8.1%
Boy/Girl Scouts	91.0%	2.5%	1.5%	0.9%	4.2%
Family care	77.0%	6.4%	3.5%	1.8%	11.4%

Table 8a. For Each of These Extracurricular Activities, Did You Spend More Than 10 Hours per Week During Your Senior Year on Them? (Items 13 and 15)

<i>Percentage indicating they spent more than 10 hours per week on each activity</i>	2010	2011
<i>In school</i>		
Music	8.3%	7.6%
Theater	3.2%	2.9%
Dance	4.0%	4.2%
Sports	23.5%	24.4%
Academic clubs, UIL academic competitions	2.3%	2.4%
Speech/debate	1.3%	0.9%
Student government	1.1%	0.7%
Career and technical student organizations	2.2%	2.4%
<i>Outside school</i>		
Music	7.0%	6.8%
Theater	1.9%	1.6%
Dance	2.8%	2.9%
Sports	17.8%	18.9%
Community service/volunteering	6.9%	5.6%
Environmental project/activities	2.5%	1.9%
Boy/Girl Scouts	1.0%	1.2%
Family care	7.1%	7.8%

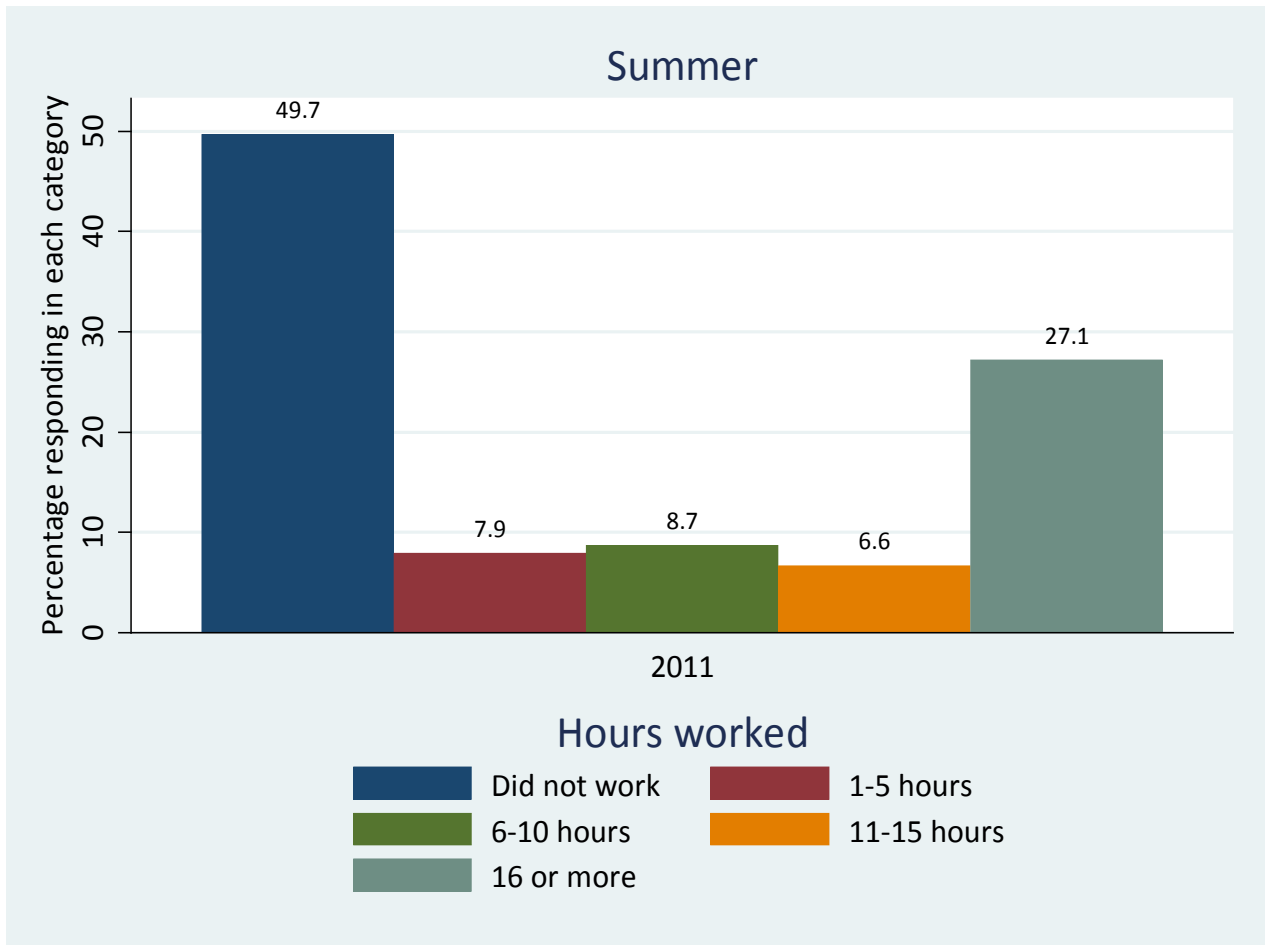
Note. Respondents could select more than one option, so percentages may not total 100%.

Table 8b. Indicate the Average Number of Hours Per Week During Your Senior Year That You Participated in the Following Extra-Curricular Activities (Includes Practices, Rehearsals, and Competitions) (Items 13 and 15)

	Did not participate	1-5 hours	6-10 hours	11-15 hours	16+ hours
<i>In school</i>					
Music	75.3%	9.8%	7.3%	3.1%	4.6%
Theater	87.5%	7.4%	2.3%	1.4%	1.4%
Dance	83.6%	8.6%	3.6%	1.8%	2.4%
Sports	53.0%	11.4%	11.2%	10.5%	14.0%
Academic clubs & UIL academic competitions	86.5%	8.4%	2.7%	1.0%	1.4%
Speech/debate	88.2%	9.3%	1.6%	0.5%	0.4%
Student government	88.7%	9.1%	1.5%	0.4%	0.2%
Career and technical student organizations	88.8%	6.2%	2.5%	1.2%	1.2%
<i>Outside school</i>					
Music	71.9%	15.4%	5.8%	2.3%	4.4%
Theater	91.8%	5.0%	1.6%	0.6%	0.9%
Dance	85.9%	8.0%	3.1%	1.1%	1.8%
Sports	52.5%	16.0%	12.6%	6.7%	12.2%
Community service/volunteering	48.4%	36.2%	9.8%	2.4%	3.2%
Environmental project/activities	78.6%	16.5%	3.0%	0.9%	1.0%
Boy/Girl Scouts	92.5%	5.2%	1.0%	0.6%	0.6%
Family care	79.4%	8.2%	4.6%	2.2%	5.5%

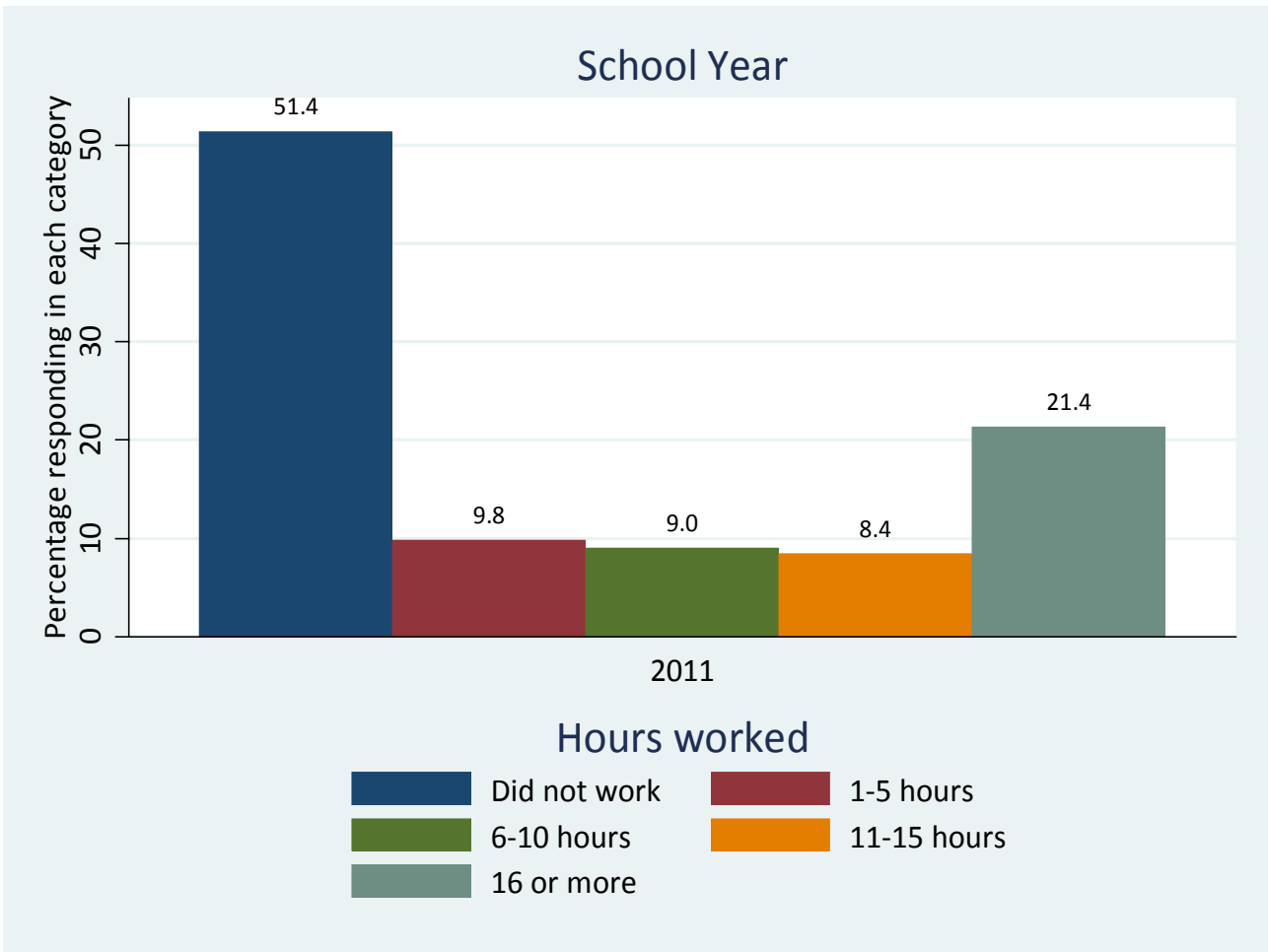
Note. Respondents could select more than one option, so percentages may not total 100%.

**Figure 1. Indicate the Average Number of Hours Per Week That You Worked During Last Summer.
(Item 16a)**



Note. Changes to this question preclude accurate comparisons to prior years.

Figure 2. Indicate the Average Number of Hours Per Week That You Worked During Your Senior Year. (Item 16b)



Note. Changes to this question preclude accurate comparisons to prior years.

Figure 3. Thinking Back on Your Years in High School, How Many Hours per Week Did You Typically Spend Studying, Doing Research, or Completing Homework Assignments Outside of Class? (Item 17)

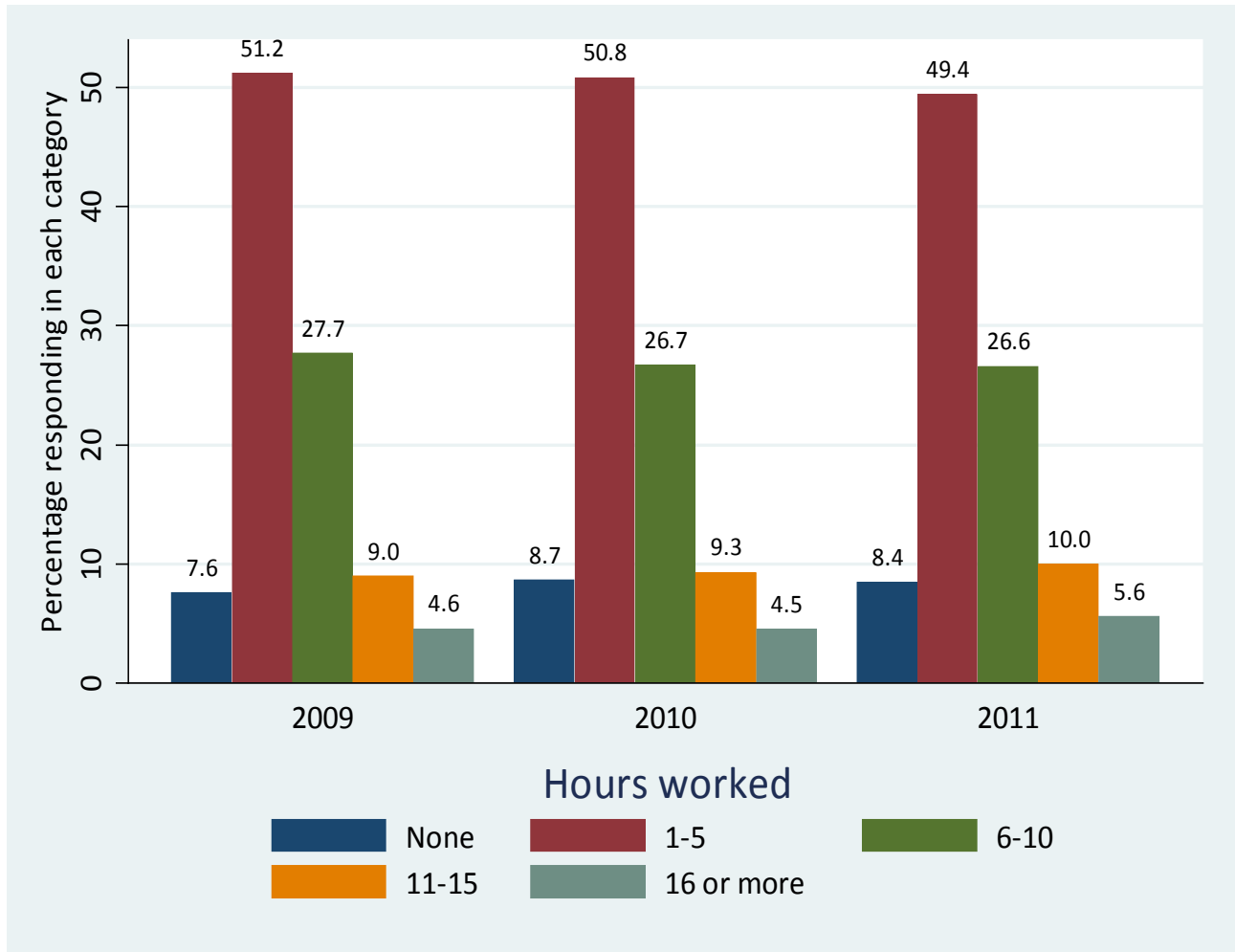


Table 9a. Mark the Answer That Best Indicates How You Feel (Item 18)

<i>Percentage who responded either Sometimes or Always</i>	2010	2011
I can do even the hardest schoolwork if I try	91.8%	91.6%
I enjoy doing my schoolwork	58.6%	59.9%
I feel/felt well prepared for TAKS	89.3%	90.7%
I try hard to do my best work	89.5%	90.7%
I feel successful in my schoolwork	90.3%	89.6%
I can reach the goals I set for myself	95.4%	94.7%
My homework helps me learn things I need to know	75.9%	76.2%
I know how I'm doing in school	92.2%	92.3%
My schoolwork makes me think about things in new ways	68.4%	69.2%
I have fun learning in my classes	76.5%	75.9%
My teachers connect what I am learning to my life outside of the classroom	66.1%	64.8%
I like to come to school	71.4%	72.5%

*Response options were *Never, Not a lot, Sometimes, Always, and Don't know.*

Table 9b. Mark the Answer That Best Indicates How You Feel (Item 18)

	Never	Not a lot	Sometimes	Always	Don't know
I can do even the hardest schoolwork if I try	2.7%	5.6%	42.4%	47.9%	1.5%
I enjoy doing my schoolwork	11.2%	28.6%	50.6%	9.0%	0.5%
I feel/felt well prepared for TAKS	2.9%	6.2%	23.5%	65.4%	2.0%
I try hard to do my best work	2.3%	6.9%	43.6%	46.6%	0.6%
I feel successful in my schoolwork	2.3%	8.0%	54.6%	34.3%	0.9%
I can reach the goals I set for myself	1.6%	3.6%	37.4%	56.1%	1.3%
My homework helps me learn things I need to know	6.4%	17.1%	47.4%	27.8%	1.3%
I know how I'm doing in school	2.0%	5.6%	28.7%	62.6%	1.1%
My schoolwork makes me think about things in new ways	8.3%	22.0%	46.9%	21.3%	1.4%
I have fun learning in my classes	5.7%	18.2%	58.1%	17.3%	0.7%
My teachers connect what I am learning to my life outside of the classroom	9.2%	25.5%	46.9%	16.8%	1.5%
I like to come to school	10.3%	16.8%	49.8%	21.9%	1.1%

INSTRUCTION AND TECHNOLOGY

Table 10a. How Well Did Your High School Help You to Actively Develop Knowledge and Skills in the Following Areas? (Item 19)

<i>Percentage who responded Somewhat well or Very well</i>	2009	2010	2011
Teamwork	89.7%	89.3%	90.6%
Creative thinking	91.7%	90.0%	90.6%
Problem solving	92.0%	91.8%	92.4%
Conflict resolution	84.1%	83.8%	84.2%
Personal health/fitness	81.0%	81.2%	82.9%
Time management	81.2%	82.7%	83.0%
Technology	84.2%	84.4%	85.6%

* Response options were *Not well*, *Somewhat well*, and *Very well*.

Table 10b. How Well Did Your High School Help You to Actively Develop Knowledge and Skills in the Following Areas? (Item 19)

	Not well	Somewhat well	Very well
Teamwork	9.4%	47.9%	42.7%
Creative thinking	9.4%	47.4%	43.2%
Problem solving	7.6%	46.9%	45.5%
Conflict resolution	15.8%	49.5%	34.7%
Personal health/fitness	17.1%	47.6%	35.3%
Time management	17.0%	49.2%	33.8%
Technology	14.4%	50.8%	34.8%

Table 11a. Rate the Quality of Instruction You Feel You Received in the Following Areas. (Item 20)

<i>Percentage who responded Good or Excellent</i>	2009	2010	2011
English Language Arts	81.6%	84.5%	82.3%
Mathematics	70.8%	70.3%	68.5%
Science	69.8%	67.1%	68.6%
Social Studies	82.0%	79.7%	79.2%
Computer/Technology	70.2%	68.7%	67.5%
Foreign Language	64.3%	62.0%	59.8%
Performing/Fine Arts	73.0%	71.8%	73.2%
Career and Technical (CTE)	.	58.9%	58.3%

Note. Missing values, denoted by a period, indicate the item was not included on the respective year's survey.

*Response options included *Excellent, Good, Fair, and Poor.*

Table 11b. Rate the Quality of Instruction You Feel You Received in the Following Areas. (Item 20)

	Excellent	Good	Fair	Poor
English Language Arts	42.7%	39.6%	14.6%	3.0%
Mathematics	31.4%	37.2%	22.3%	9.2%
Science	28.7%	40.0%	25.0%	6.3%
Social Studies	37.1%	42.1%	18.0%	2.8%
Computer/Technology	27.5%	39.9%	25.5%	7.0%
Foreign Language	24.7%	35.1%	27.1%	13.1%
Performing/Fine Arts	39.7%	33.5%	21.3%	5.6%
Career and Technical (CTE)	23.9%	34.5%	31.5%	10.2%

**Figure 4. Which of the Following Describes Your Computer and Internet Access at Home?
(Item 21)**

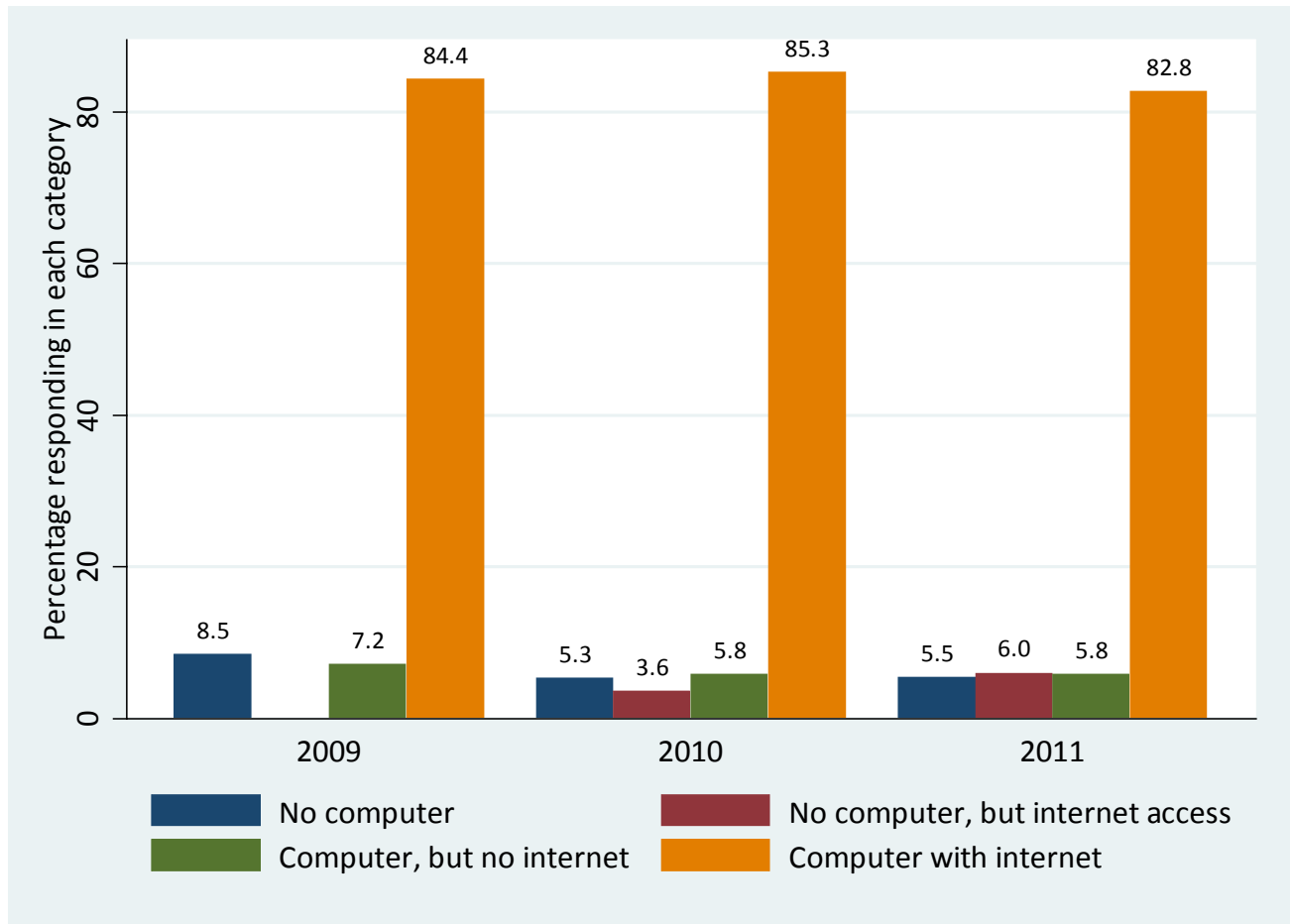


Table 12a. How Frequently Do You Use a Computer or Other Internet-Capable Devices (For Example, a Mobile Phone, iTouch, or iPad)? (Item 22)

<i>Percentage who responded At least once a week or more</i>	2009	2010	2011
At home?	83.9%	88.0%	88.1%
At school?	73.1%	80.7%	84.9%
To present material in class, for example, using PowerPoint?	22.0%	27.9%	30.4%
To type a paper or class assignment?	53.5%	56.9%	58.0%
To search the Internet to complete class-related assignments?	62.7%	66.5%	68.8%
To research college/career choices?	51.0%	53.3%	52.4%
To complete online forms or applications for college/employment?	43.4%	46.5%	48.1%
To communicate with teachers (e.g., email, IM, Facebook, etc.)?	17.8%	26.6%	33.9%
To monitor grades/progress in school?	29.4%	50.5%	61.0%

* Responses were *Never, Less than once a week, Once or twice a week, Every day or almost every day.*

Table 12b. How Frequently Do You Use a Computer or Other Internet-Capable Devices (For Example, a Mobile Phone, iTouch, or iPad)? (Item 22)

	Never	Less than once a week	Once or twice a week	Every day or almost every day
At home?	6.8%	5.1%	12.2%	76.0%
At school?	3.2%	11.9%	27.4%	57.5%
To present material in class, for example, using PowerPoint?	15.2%	54.5%	20.3%	10.1%
To type a paper or class assignment?	6.3%	35.8%	40.1%	17.9%
To search the Internet to complete class-related assignments?	5.3%	26.0%	41.2%	27.5%
To research college/career choices?	10.5%	37.1%	33.5%	18.9%
To complete online forms or applications for college/employment?	12.5%	39.3%	31.4%	16.7%
To communicate with teachers (e.g., email, IM, Facebook, etc.)?	29.4%	36.6%	18.9%	15.0%
To monitor grades/progress in school?	18.7%	20.3%	30.0%	31.0%

Table 13a. Indicate How Much You Agree With Each of the Following Statements About Technology Use at School: (Item 23)

Percentage who responded Agree or Strongly agree	2010	2011
My teachers effectively use the technology resources that are available.	90.4%	90.9%
I would like to use more electronic communication with my classmates as part of my schoolwork.	83.1%	77.1%
I would like to use more electronic communication with my teachers.	78.8%	72.6%
I would like to use more online resources in my classes.	84.4%	80.4%

* Responses were Strongly agree, Agree, Disagree, Strongly disagree, and Don't know/unsure.

Table 13b. Indicate How Much You Agree With Each of the Following Statements About Technology Use at School: (Item 23)

	Strongly agree	Agree	Disagree	Strongly disagree
My teachers effectively use the technology resources that are available.	28.4%	62.5%	6.8%	2.3%
I would like to use more electronic communication with my classmates as part of my schoolwork.	28.0%	49.2%	18.5%	4.3%
I would like to use more electronic communication with my teachers.	23.9%	48.7%	23.0%	4.5%
I would like to use more online resources in my classes.	28.2%	52.2%	15.4%	4.2%

Figure 5. Do Your Parents Use ParentConnect / GradeSpeed to Monitor Your Grades? (Item 24)

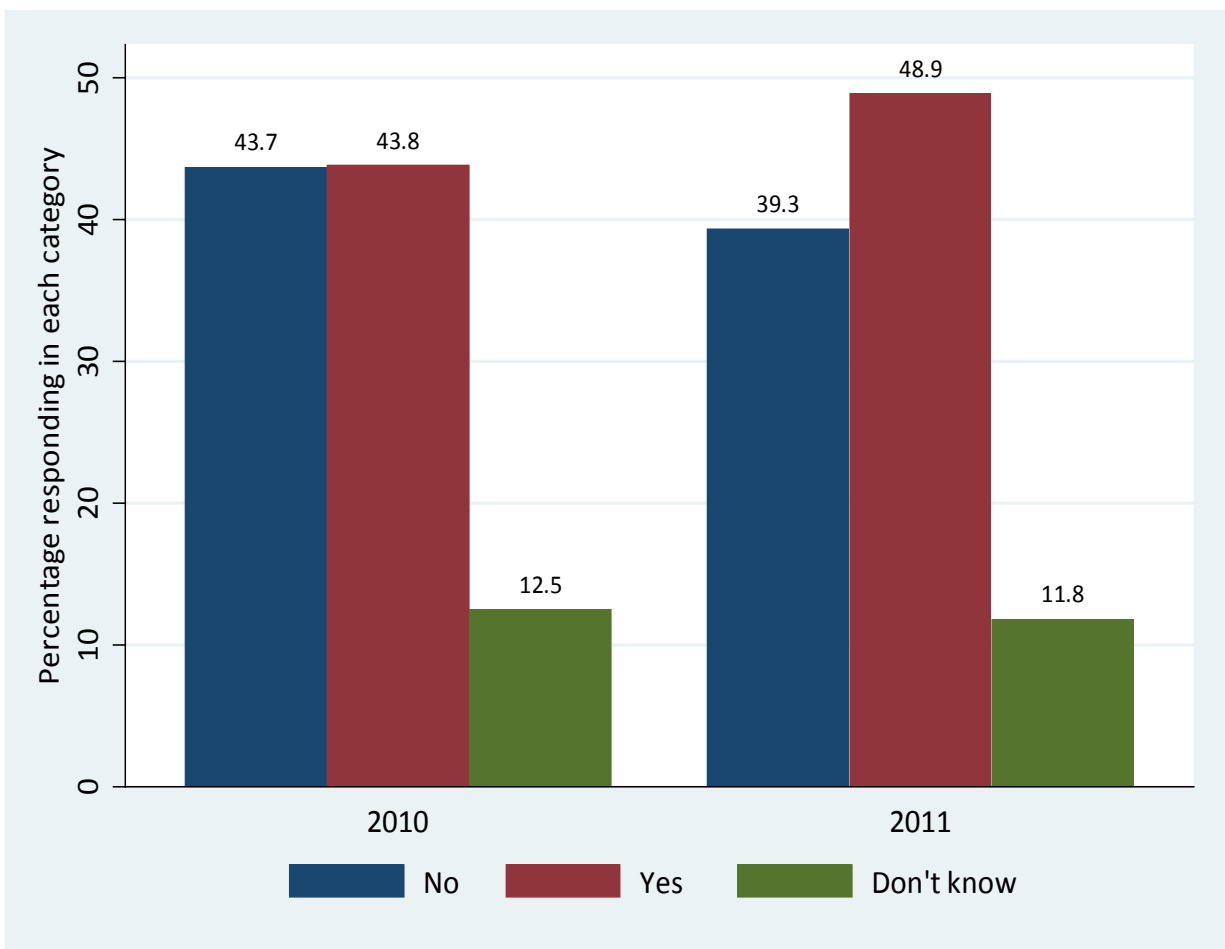


Table 14a. How Frequently Do You Log onto Naviance / Family Connection for the Following Activities? (Item 25)

<i>Percentage who responded Once a week or more</i>	2010	2011
College search	18.0%	20.4%
Resume building	8.7%	9.5%
Career exploration	11.9%	13.3%
College visit sign up	12.1%	13.4%
Class rank and GPA inquiry	15.4%	17.9%
Counselor directed activities, such as personality questionnaires	8.2%	9.8%
Other	10.7%	14.7%

* Response options were *Never, Less than once a week, Once or twice a week, and Every day or almost every day.*

Table 14b. How Frequently Do You Log onto Naviance / Family Connection for the Following Activities? (Item 25)

	Never	Less than once a week	Once or twice a week	Every day or almost every day
College search	37.2%	42.4%	17.0%	3.4%
Resume building	55.1%	35.4%	8.0%	1.5%
Career exploration	49.7%	37.0%	10.6%	2.7%
College visit sign up	45.9%	40.8%	11.2%	2.2%
Class rank and GPA inquiry	39.1%	43.0%	14.5%	3.4%
Counselor directed activities, such as personality or career questionnaires	53.3%	36.9%	7.7%	2.1%
Other	57.8%	27.5%	10.2%	4.5%

POSTSECONDARY PREPARATION AND ADVISING

Table 15. At What Time in Your Life Did You Start Thinking about College as a Possibility After High School? (Item 27)

	2009	2010	2011
As long ago as I can remember	38.7%	37.8%	36.9%
In elementary school	7.6%	8.4%	9.1%
In middle/junior high school	21.0%	20.3%	21.0%
In high school	30.9%	31.5%	30.7%
I've never thought about college as an option after high school	1.8%	2.1%	2.2%

Table 16a. High School Preparation for Post-Graduation Opportunities (Item 28)

<i>Percentage who responded Somewhat well or Very well</i>	2009	2010	2011
How well prepared were you to plan your high school course selections?	91.2%	92.1%	90.6%
How well prepared were you to meet your college and career goals?	86.1%	86.0%	85.4%
How well prepared have you been for the college/technical/vocational school application process?	82.0%	82.3%	81.3%
How well informed have you been about obtaining financial aid for education after high school (whether or not you applied)?	81.0%	81.8%	84.2%

Note. Response options were *Very well*, *Somewhat well*, and *Not well*.

Table 16b. High School Preparation for Post-Graduation Opportunities (Item 28)

	Very well	Somewhat well	Not well
How well prepared were you to plan your high school course selections?	41.5%	49.1%	9.4%
How well prepared were you to meet your college and career goals?	36.0%	49.4%	14.6%
How well prepared have you been for the college/technical/vocational school application process?	32.5%	48.8%	18.7%
How well informed have you been about obtaining financial aid for education after high school (whether or not you applied)?	39.3%	44.9%	15.8%

Table 17. For Each of the Subjects Below, Indicate How Prepared You Feel to Complete College-Level Coursework. (Item 29)

	English/ Language Arts	Math	Science	Social Studies
I am not prepared for regular or advanced college-level coursework	3.9%	8.3%	6.7%	4.3%
I will have to take remedial or developmental classes to prepare for college-level coursework	18.1%	28.1%	25.0%	18.0%
I am prepared for any college-level coursework	70.4%	54.3%	58.6%	69.8%
I do not know if I am prepared for college-level coursework	7.6%	9.3%	9.7%	7.9%

Table 18. How Did You Prepare for Continuing Education? (Item 30)

	2010	2011
Took Advanced Placement or International Baccalaureate classes	47.5%	53.0%
Visited college campuses	55.1%	56.6%
Attended college fairs	51.1%	47.1%
Met with counselor or Project Advance staff to discuss college plans and processes	.	52.0%
Met with a college representative/recruiter at my high school	.	44.7%
Completed and submitted a FAFSA	51.9%	56.7%
Completed and submitted a scholarship application	41.4%	44.3%
Took college entrance tests	68.2%	69.5%
Took test prep classes	39.6%	47.3%
Completed or are enrolled in ACC courses	34.6%	38.3%
Ordered and submitted transcripts	47.7%	54.2%
Senior ACC application process	39.7%	40.2%
Other college-level courses	6.3%	8.2%
None of the above	10.8%	8.2%

Note. Results for this item may not match prior year reports. Prior to 2011, the results for this question were based on the total number of survey respondents. In 2011, the results are based on the number of respondents completing this particular question and are consistent with the way all questions on the survey are analyzed. Respondents could select more than one option, so percentages may not total 100%. Missing values, denoted by a period, indicate the item was not included on the respective year's survey.

Table 19a. Have You Applied to the Following Types of Postsecondary Institutions? (Items 31, 32, and 33)

	2010	2011
Have you applied to a 2-year college?	57.2%	61.7%
Have you applied to a 4-year college?	69.1%	71.5%
Have you applied to a business/technical/vocational school?	14.5%	12.2%

Table 19b. To How Many Postsecondary Institutions Have You *Applied*? (Items 31, 32, and 33)

	2010	2011
None	12.0%	10.9%
1 to 3	47.2%	47.6%
4 or more	40.9%	41.5%

Figure 6. To How Many Postsecondary Institutions Have You *Applied*? (Items 31, 32, and 33)

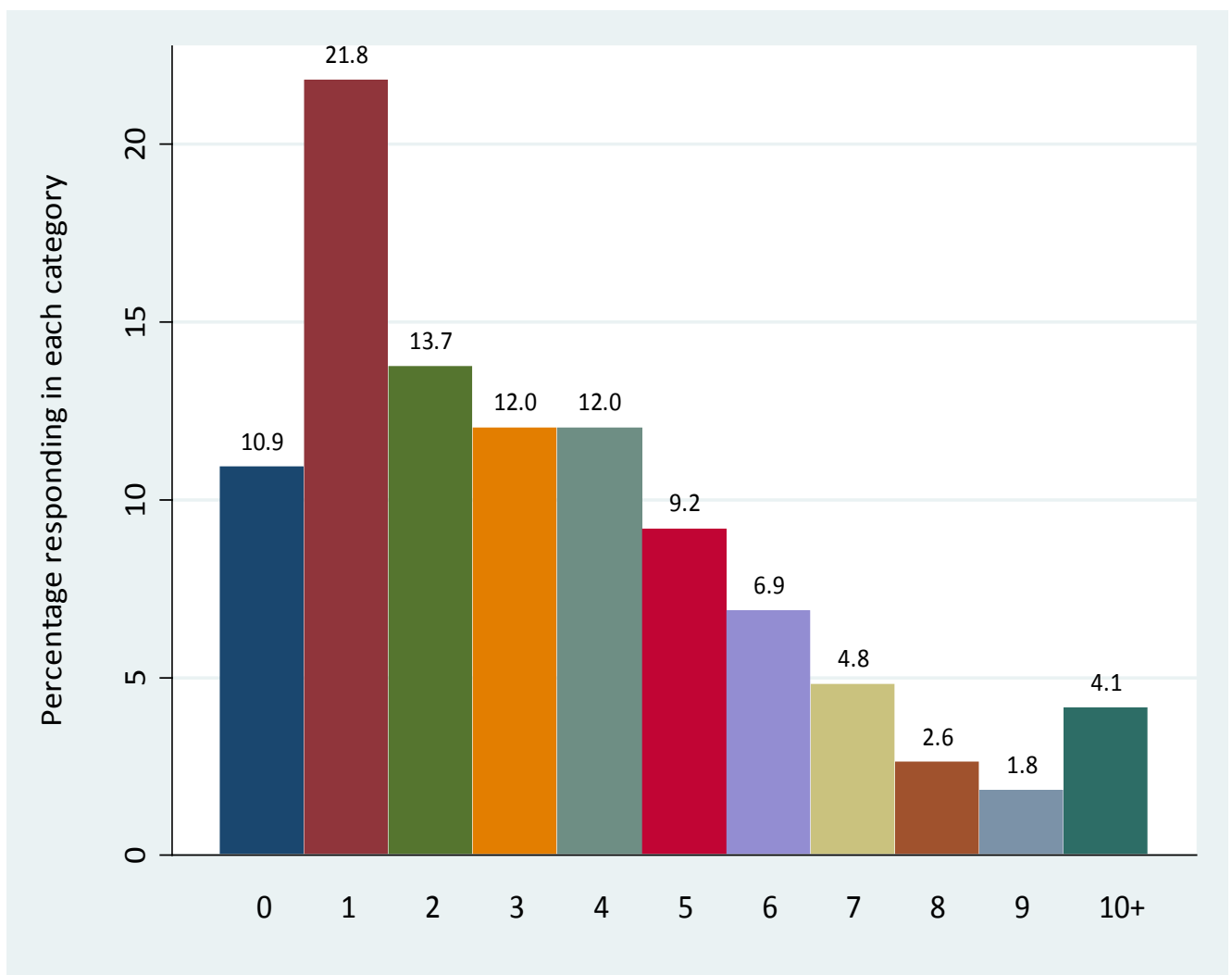


Table 20. To How Many Postsecondary Institutions Have You Been Accepted? (Items 34, 35, and 36)

	2010	2011
Have you been accepted to a 2-year college?	46.5%	51.9%
Have you been accepted to a 4-year college?	59.4%	58.8%
Have you been accepted to a business/technical/vocational school?	9.2%	8.3%

Figure 7. To How Many Postsecondary Institutions Have You Been Accepted? (Items 34, 35, and 36)

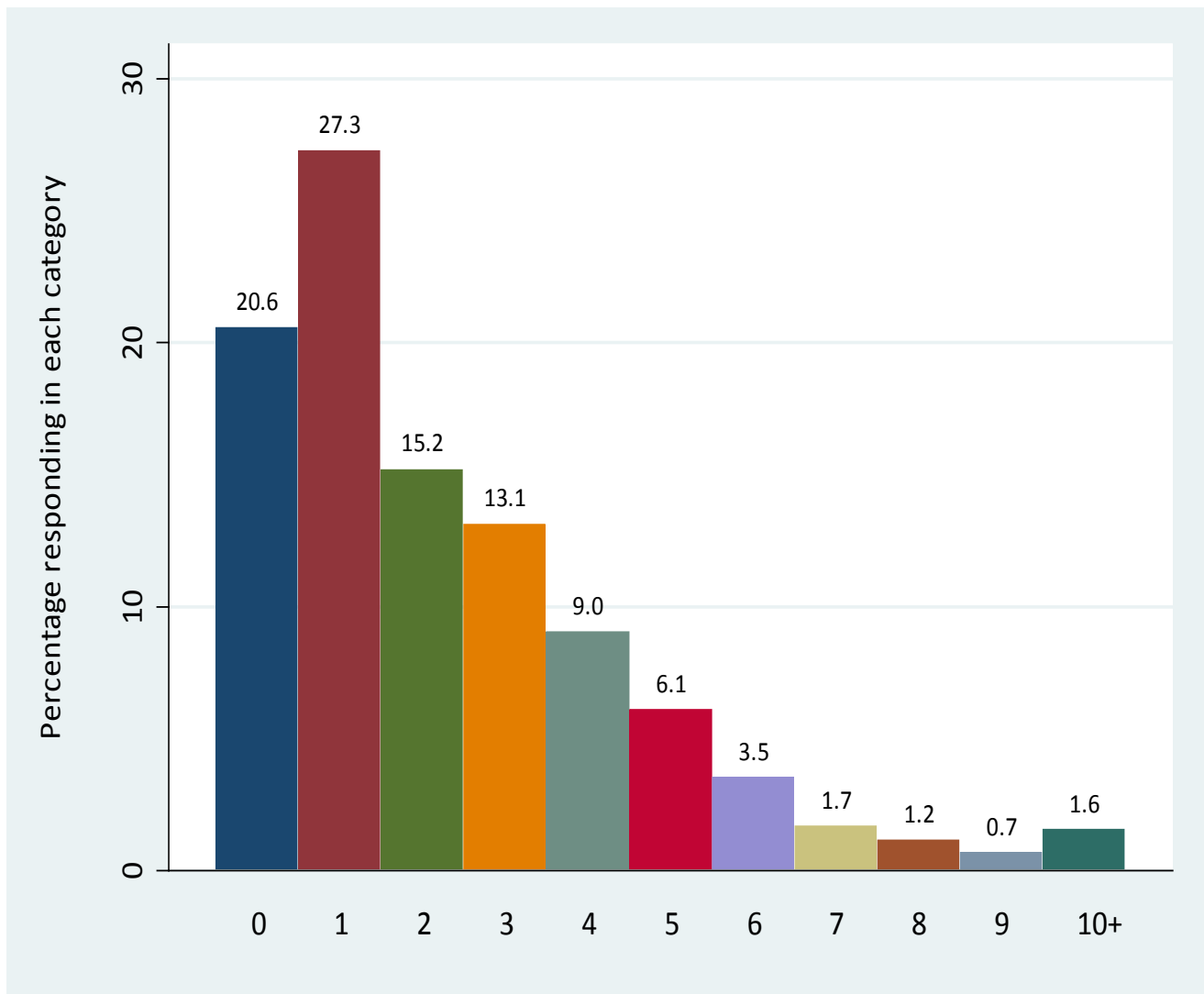


Table 21. Indicate Whether the Following People Helped You With Any of the Activities Listed Below. (Item 37)

	Advisory	College and Career Center Advisor	School counselor	Teacher
Helped select courses for work or college	21.5%	27.2%	49.1%	27.5%
Encouraged to take AP/honors courses	20.8%	14.3%	36.1%	50.4%
Encouraged to continue education	44.7%	36.3%	52.1%	57.4%
Talked about colleges/schools	27.1%	34.2%	37.8%	35.4%
Discussed careers	28.5%	30.8%	33.6%	32.3%
Encouraged to apply to multiple schools	28.7%	36.5%	38.2%	33.0%
Helped complete applications for college	13.6%	34.7%	26.0%	18.9%
Helped with financial aid (FAFSA and/or scholarships)	13.2%	36.3%	24.3%	14.8%
Helped choose college	15.0%	26.8%	22.8%	22.7%
Helped plan for college expenses	14.4%	31.1%	22.2%	15.3%
Helped with college application essays or personal statements	13.6%	26.5%	20.6%	37.2%
I never talked to this person about college or careers.	26.8%	23.1%	22.9%	15.6%

Note. Results for this item may not match prior year reports. Prior to 2011, the results for this question were based on the total number of survey respondents. In 2011, the results are based on the number of respondents completing this particular question and are consistent with the way all questions on the survey are analyzed. Respondents could select more than one option, so percentages may not total 100%.

Table 22. In Which of These Programs Did You Participate? (Item 38)

	2010	2011
Advancement via Individual Determination (AVID)	8.5%	7.4%
ACC Early College Start/Dual credit	.	35.5%
ACC College Connections	20.0%	19.4%
Immigrant College Access	2.7%	3.4%
None of the above	54.4%	48.9%

Note. Results for this item may not match prior year reports. Prior to 2011, the results for this question were based on the total number of survey respondents. In 2011, the results are based on the number of respondents completing this particular question and are consistent with the way all questions on the survey are analyzed. Respondents could select more than one option, so percentages may not total 100%. Missing values, denoted by a period, indicate the item was not included on the respective year's survey.

Table 23. If You Participated in Any of The Programs from Item 38, Indicate Whether the Programs Helped You With Any of the Activities Listed Below. (Item 39)

	AVID	ACC - Early College Start/Dual credit	ACC - College Connections	Immigrant College Access
Helped select courses for work or college	29.0%	37.6%	17.2%	9.2%
Encouraged to take AP/honors courses	30.9%	28.4%	9.0%	4.8%
Encouraged to continue education	34.1%	36.6%	18.1%	10.6%
Talked about colleges/schools	33.3%	21.0%	14.7%	9.7%
Discussed careers	32.0%	22.9%	15.0%	10.3%
Encouraged to apply to multiple schools	30.3%	17.6%	12.3%	11.2%
Helped complete applications for college	27.4%	14.6%	12.5%	9.7%
Helped with financial aid (FAFSA and/or scholarships)	24.6%	13.9%	12.2%	12.1%
Helped choose college	26.5%	17.1%	11.7%	8.6%
Helped plan for college expenses	26.7%	15.9%	12.3%	9.7%
Helped with college application essays or personal statements	29.3%	15.1%	10.2%	8.4%

Note. Results for this item may not match prior year reports. Prior to 2011, the results for this question were based on the total number of survey respondents. In 2011, the results are based on the number of respondents completing this particular question and are consistent with the way all questions on the survey are analyzed. Respondents could select more than one option, so percentages may not total 100.

Table 24. Which of the Following Did a Family Member Do to Help You Prepare for Life After High School Graduation? (Item 40)

	2011
Talked to you about career and/or college options	81.6%
Talked to you about finances	71.1%
Talked to you about your responsibilities as an adult	77.5%
Talked to you about what a career and/or college would be like	70.1%
Helped you with financial aid (FAFSA and/or scholarships)	57.0%
Helped you complete applications for college or vocational/technical schools	46.6%
Encouraged you to apply to several different colleges	60.9%
No one in my family talked to me about or helped me with these things.	10.0%

Note. Results for this item may not match prior year reports. Prior to 2011, the results for this question were based on the total number of survey respondents. In 2011, the results are based on the number of respondents completing this particular question and are consistent with the way all questions on the survey are analyzed. Respondents could select more than one option, so percentages may not total 100%.

Table 25. Indicate If You Know At Least One Teacher Who Would Do The Following. (Item 41)

	2010	2011
Would be willing to give you extra help with your schoolwork if needed	85.9%	87.1%
Would be willing to help you with a personal problem	73.9%	76.2%
Cares about how you're doing in school	81.4%	83.8%
Would be willing to write you a recommendation for a job or college	81.9%	84.0%
Knows what you will be doing next year	66.1%	67.3%
Would be willing to help you even after you graduate	68.4%	67.7%

Note. Respondents could select more than one option, so percentages may not total 100%.

Table 26. Were Your School Counselors and Project Advance Staff Available to Talk to You About College and Careers? (Item 42)

	Counselor	Project ADVANCE facilitator
Yes, they were available and I talked to them	58.2%	56.7%
Yes, but I didn't try to talk to them	23.5%	22.2%
No. I tried and wasn't able to meet with them.	9.1%	4.6%
No, but I never tried to meet with them	9.2%	16.5%

Note. This was a new item in 2011.

Table 27. How Easy Has It Been for You and Your Parents to Understand the Process of Applying for Financial Aid? (Item 43)

	2009	2010	2011
Difficult	12.8%	13.9%	11.8%
Some parts easy, some parts difficult	43.8%	42.5%	46.6%
Easy	22.2%	24.2%	24.9%
Did not apply for financial aid	21.2%	19.5%	16.7%

Table 28. How Do You Plan to Pay for Your Education After High School? (Item 44)

	2010	2011
Scholarships and/or grants	60.5%	65.0%
Loans	39.7%	41.4%
Family or personal savings	52.7%	55.2%
Working during the school year	47.8%	52.9%
Working during the summer	50.6%	56.3%
I don't know	14.8%	14.4%

Note. Results for this item may not match prior year reports. Prior to 2011, the results for this question were based on the total number of survey respondents. In 2011, the results are based on the number of respondents completing this particular question and are consistent with the way all questions on the survey are analyzed. Respondents could select more than one option, so percentages may not total 100%.

Table 29. If You Did Not Submit a Financial Aid Application, Why Not? (Item 45)

	2009	2010	2011
I do not need financial aid to attend college	23.4%	20.9%	23.5%
My parents were not willing to submit private financial information	6.6%	7.7%	8.1%
My family did not think we would qualify for or were eligible for financial aid	23.8%	22.1%	21.8%
I do not plan to go to college	9.8%	10.1%	12.9%
I did not know about the financial aid process	36.4%	39.2%	33.7%

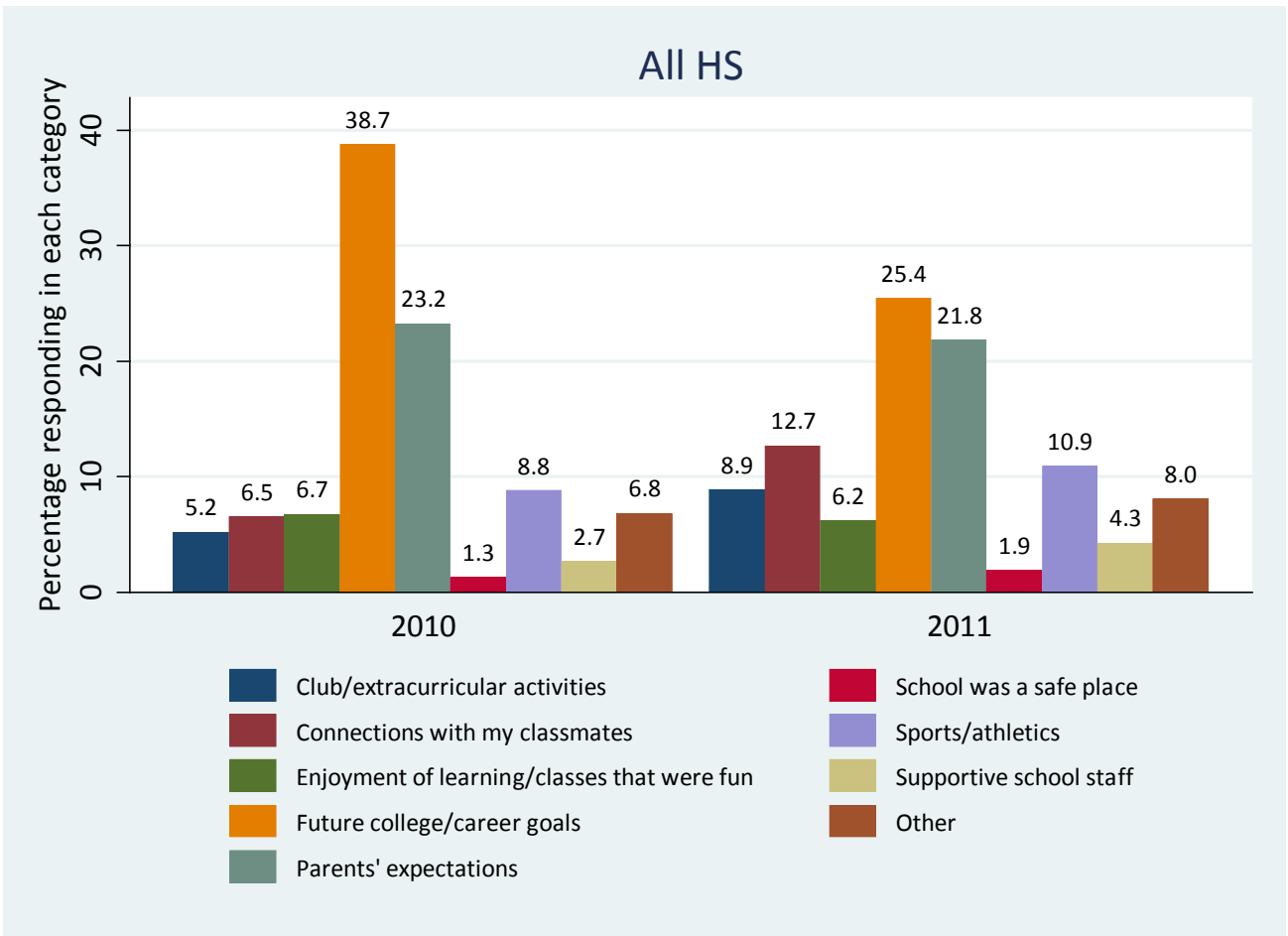
Table 30. Without Including Any Financial Aid (Loans, Grants, or Scholarships), Do These Estimates Sound Right to You? (Item 46)

	No, they cost a lot less	Yes, that's about right	No, they cost a lot more	I have no idea
Full-time (12 hours) tuition and fees at ACC cost = about \$700 a semester	6.7%	37.4%	7.4%	48.5%
Full-time tuition and fees at UT Austin = about \$4,700 a semester	3.3%	26.5%	26.6%	43.6%
Full-time tuition and fees at Harvard University = about \$17,000 a semester	3.8%	20.2%	25.2%	50.9%
The total cost of books for full-time college = between \$1,000 and \$2,000 a school year	6.2%	45.2%	7.7%	40.9%

Note. This was a new item in 2011.

ADDITIONAL RESULTS

Figure 8. What Is the *One* Thing That Was Most Important to Keeping You Going Through School All the Way to Graduation? (Item 47)



Response Rate and Survey Respondent Details

Table 31. Response Rate Details, by Campus

	Seniors enrolled*	Seniors ineligible for survey or withdrawn**	Final number of seniors eligible***	Surveys completed	Initial response rate (% of all seniors enrolled as of March 8, 2011)	Adjusted response rate (% of eligible seniors enrolled as of date of survey administration)
Akins	526	30	496	382	72.62%	77.02%
Anderson	503	12	491	472	93.84%	96.13%
Austin	554	18	536	491	88.63%	91.60%
Bowie	639	8	631	622	97.34%	98.57%
Crockett	389	23	366	288	74.04%	78.69%
Garza	202	35	167	92	45.54%	55.09%
Green Tech	137	8	129	120	87.59%	93.02%
LASA	201	1	200	198	98.51%	99.00%
LBJ	223	3	220	178	79.82%	80.91%
Lanier	293	21	272	246	83.96%	90.44%
McCallum	338	8	330	309	91.42%	93.64%
Reagan	220	4	216	166	75.45%	76.85%
Travis	303	10	293	229	75.58%	78.16%
All high schools	4,528	181	4,347	3,793	83.77%	87.26%

Source: AISD student data systems

* Senior enrollment for Spring 2011 as of March 8, 2011

** Campus-level special education staff identified those seniors cognitively unable to take the survey. These were the only seniors deemed “ineligible.” Withdrawn seniors are those who withdrew from the district between March 8, 2011 and the date of survey administration at the particular campus.

*** This column was used to calculate the adjusted response rate. It excludes ineligible and withdrawn seniors as described above.

Table 32. Demographic Characteristics of Survey Respondents

	African American		Asian		Hispanic		White		Two or more races		Female		Male	
	Survey respondents	All seniors	Survey respondents	All seniors	Survey respondents	All seniors	Survey respondents	All seniors	Survey respondents	All seniors	Survey respondents	All seniors	Survey respondents	All seniors
Akins	10.7%	11.0%	4.5%	4.0%	69.9%	69.8%	12.6%	13.3%	1.8%	1.5%	49.7%	48.5%	50.3%	51.5%
Anderson	6.6%	7.4%	4.7%	4.6%	26.3%	26.2%	59.5%	59.0%	2.5%	2.4%	44.3%	43.9%	55.7%	56.1%
Austin	10.0%	9.7%	2.4%	2.3%	39.1%	40.6%	46.0%	44.8%	2.2%	2.2%	50.3%	50.4%	49.7%	49.6%
Bowie	3.1%	3.1%	4.8%	4.9%	29.1%	29.1%	57.6%	57.1%	3.5%	3.8%	50.5%	50.5%	49.5%	49.5%
Crockett	8.3%	8.7%	2.4%	1.8%	71.2%	70.2%	15.6%	17.2%	2.4%	2.1%	56.3%	50.6%	43.8%	49.4%
Garza	4.3%	7.4%	2.2%	2.0%	37.0%	39.1%	54.3%	49.5%	2.2%	2.0%	41.3%	42.6%	58.7%	57.4%
Green Tech	16.7%	16.8%	0.0%	0.0%	80.8%	81.0%	0.8%	0.7%	1.7%	1.5%	45.8%	43.8%	54.2%	56.2%
LASA	4.0%	4.0%	14.6%	14.4%	24.7%	24.9%	54.5%	54.7%	2.0%	2.0%	54.0%	54.2%	46.0%	45.8%
LBJ	48.3%	48.4%	0.6%	0.4%	46.6%	45.7%	2.8%	2.7%	0.6%	1.3%	52.2%	51.6%	47.8%	48.4%
Lanier	12.2%	13.0%	3.3%	2.7%	78.5%	77.5%	4.9%	5.5%	0.4%	0.7%	54.1%	50.2%	45.9%	49.8%
McCallum	23.0%	23.1%	1.3%	1.5%	25.2%	25.7%	47.6%	46.7%	2.6%	2.7%	51.1%	49.7%	48.9%	50.3%
Reagan	24.7%	25.0%	0.0%	0.0%	71.7%	70.5%	1.8%	2.7%	0.6%	0.9%	48.8%	50.5%	51.2%	49.5%
Travis	10.5%	10.2%	1.3%	1.3%	81.2%	81.8%	3.5%	3.3%	3.1%	2.6%	46.3%	46.9%	53.7%	53.1%
All high schools	11.8%	12.3%	3.6%	3.2%	47.7%	49.5%	34.1%	32.1%	2.2%	2.2%	49.9%	48.9%	50.1%	51.1%

Source. AISD student data systems.

Note. To assess the representativeness of the respondents relative to the population of 12th-grade students enrolled during the Spring 2010 semester, a difference in proportions test was conducted. No statistically significant differences existed between the demographics of survey respondents and those of all seniors.